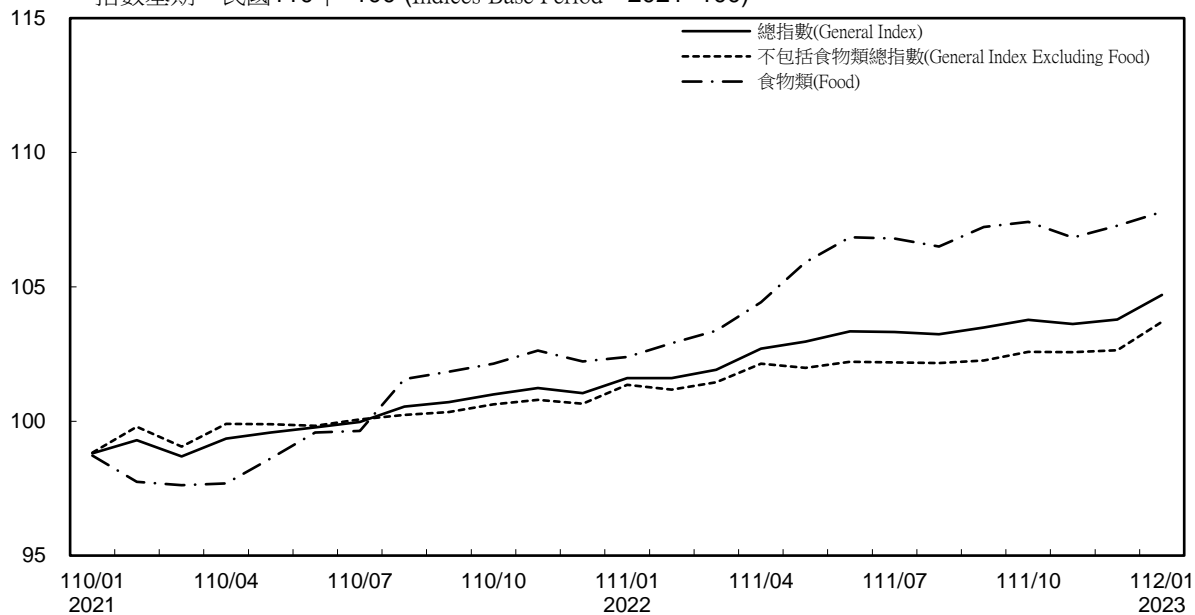


# 消費者物價指數及變動率圖

## Trends of Consumer Price Indices

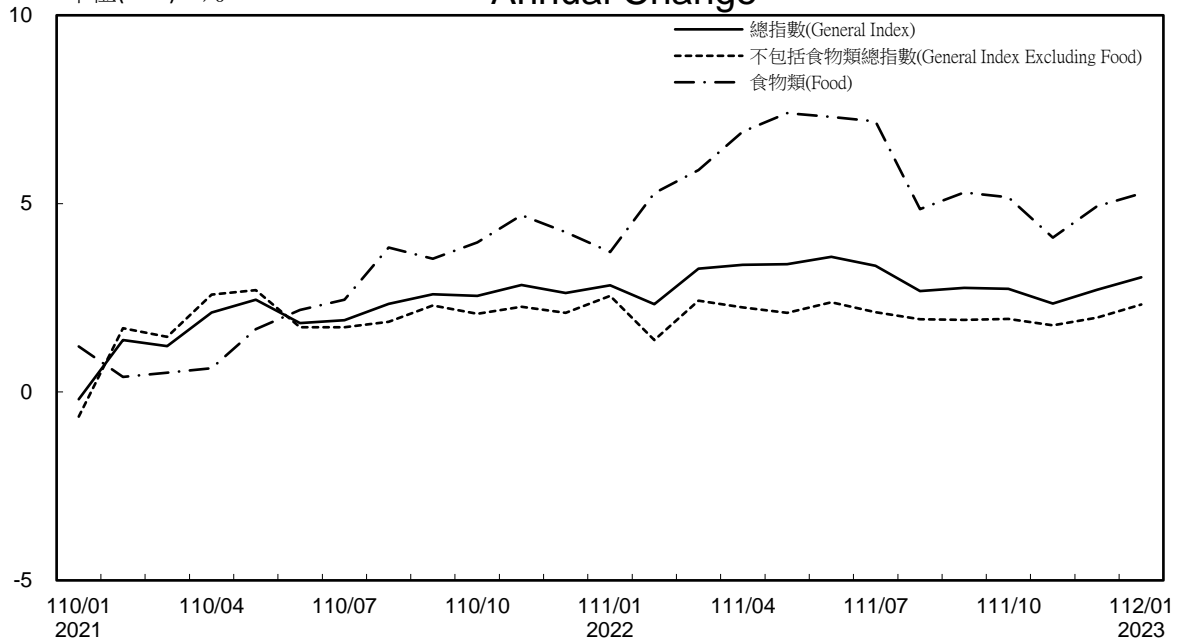
指數基期：民國110年=100 (Indices Base Period : 2021=100)



## 年增率

## Annual Change

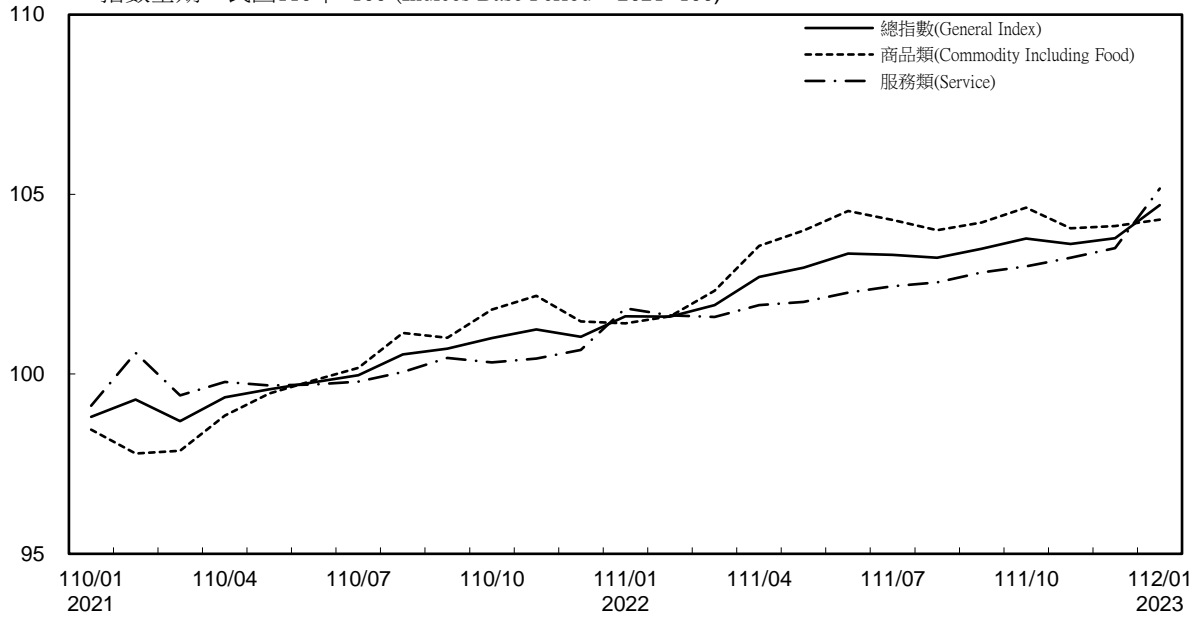
單位(Unit) : %



# 消費者物價指數及變動率圖(續)

## Trends of Consumer Price Indices (Cont.)

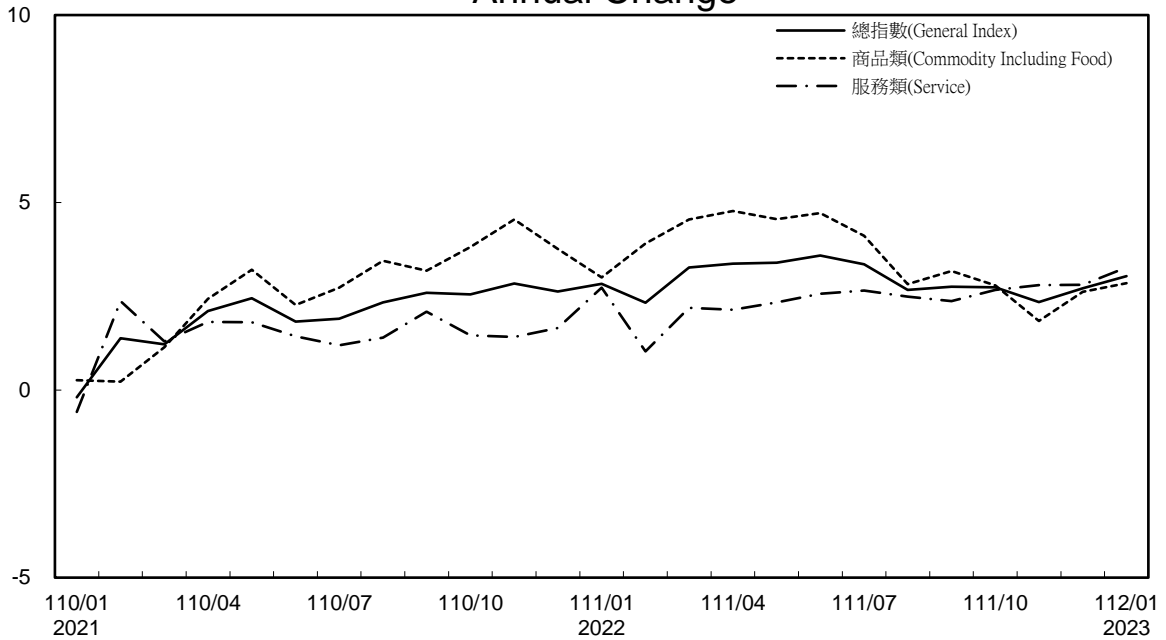
指數基期：民國110年=100 (Indices Base Period : 2021=100)



### 年增率

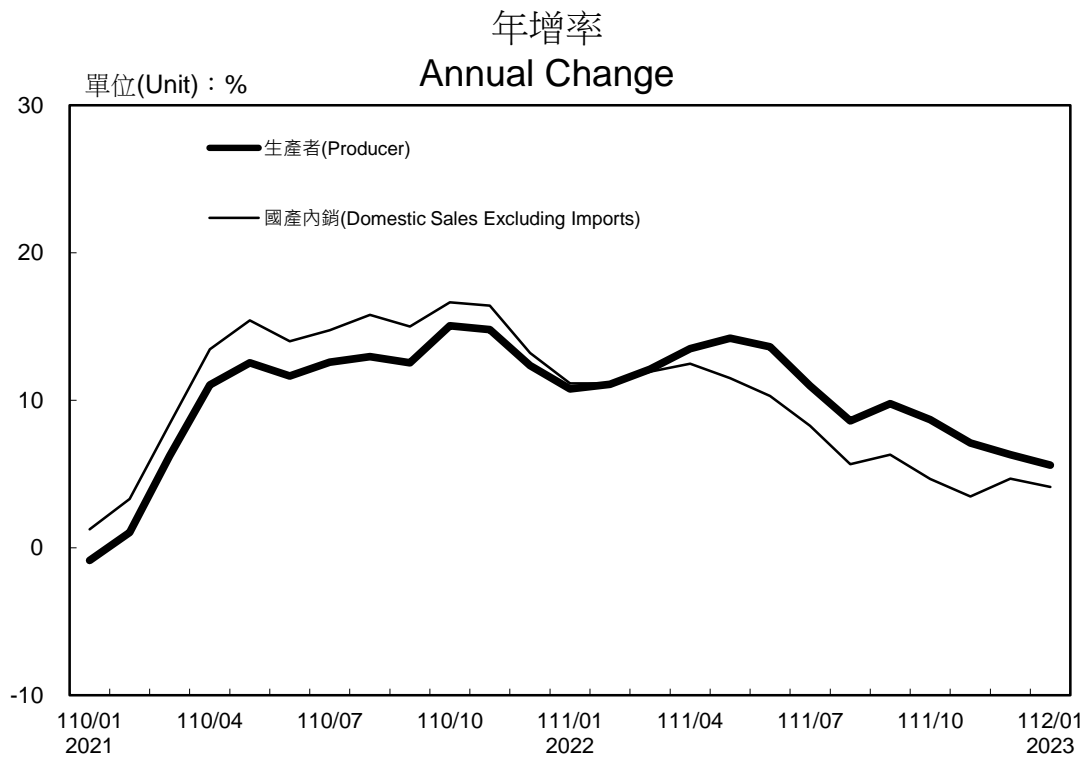
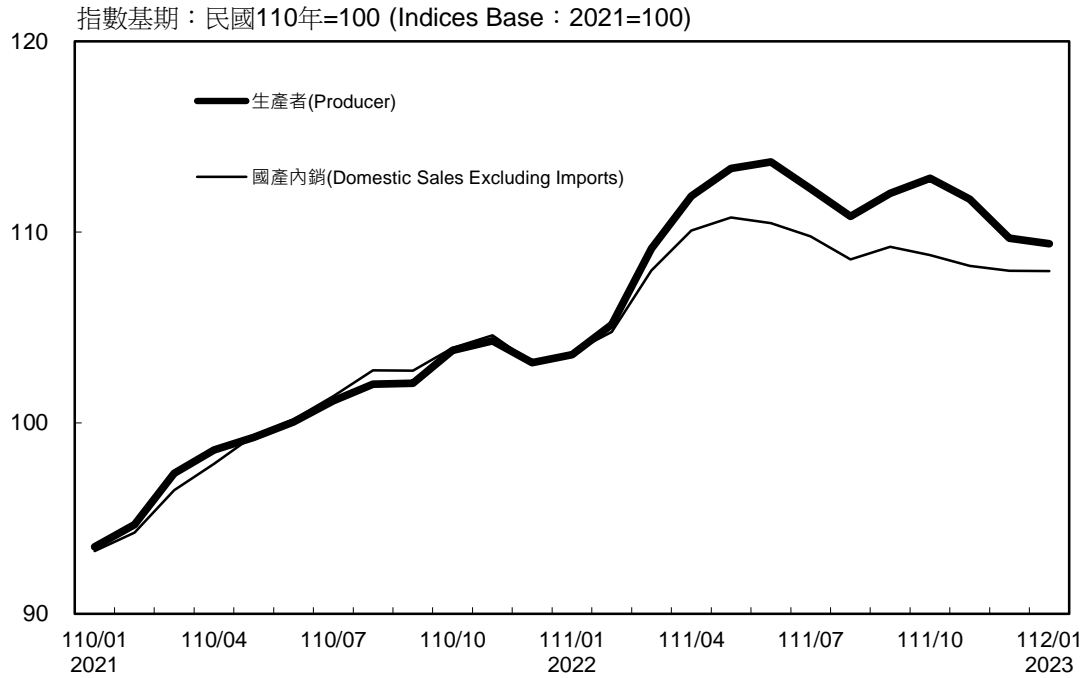
### Annual Change

單位(Unit)：%



# 生產者、國產內銷物價指數及變動率圖

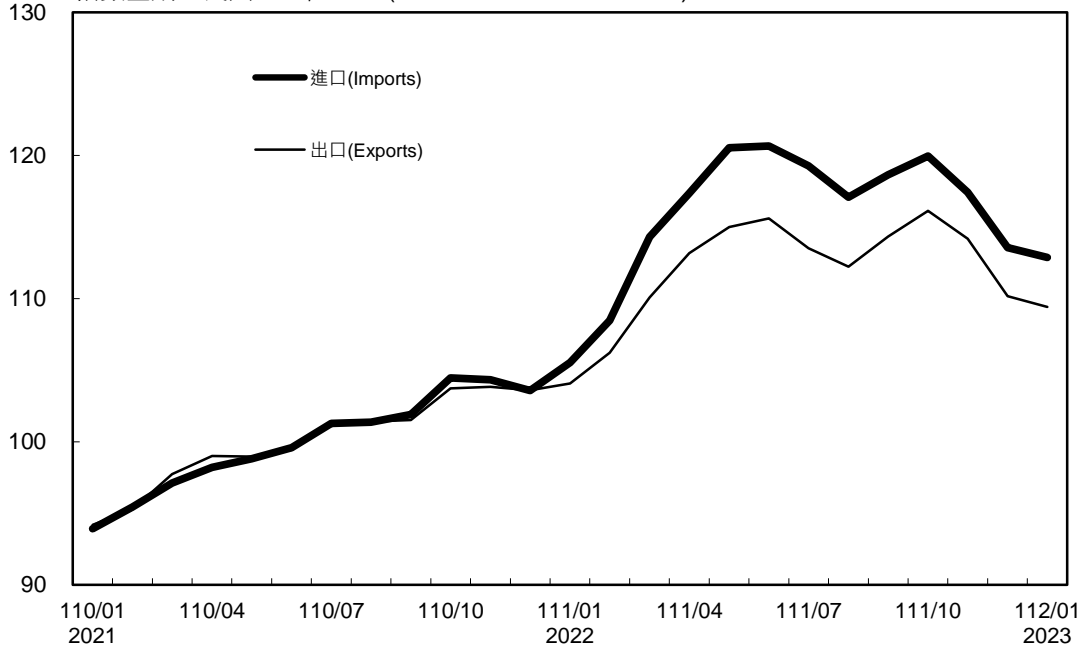
## Trends of Producer & Domestic Sales Excluding Imports Price Indices



# 進、出口物價指數及變動率圖 (以新台幣計價)

## Trends of Import & Export Price Indices (on NTD Basis)

指數基期：民國110年=100 (Indices Base : 2021=100)



### 年增率

### Annual Change

單位(Unit) : %

