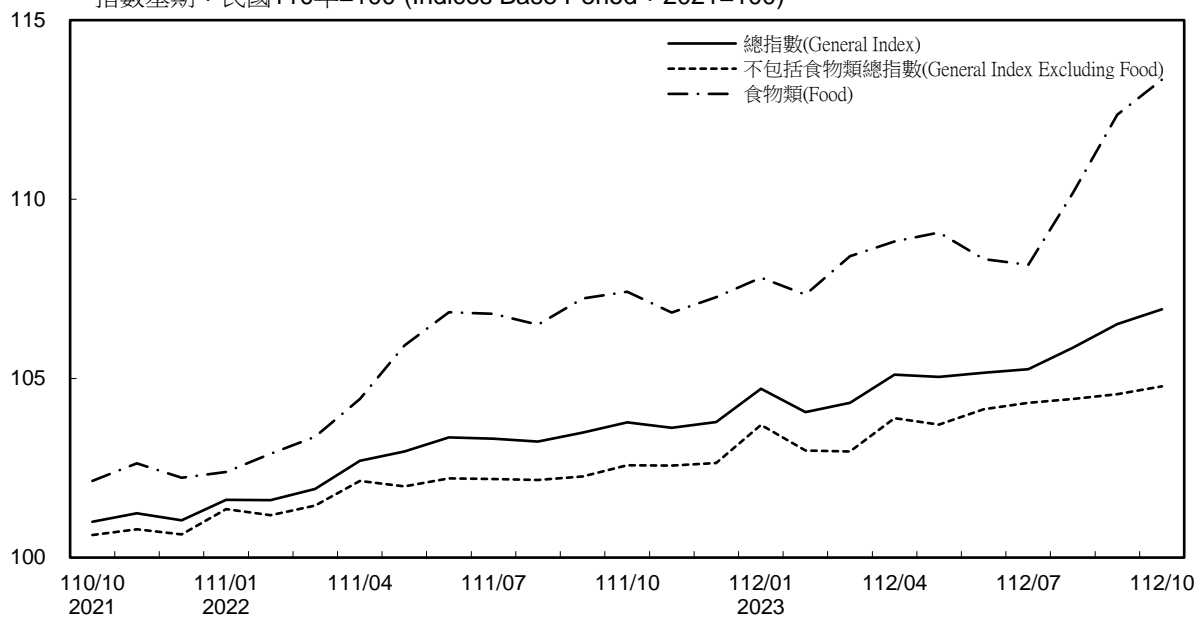


# 消費者物價指數及變動率圖 Trends of Consumer Price Indices

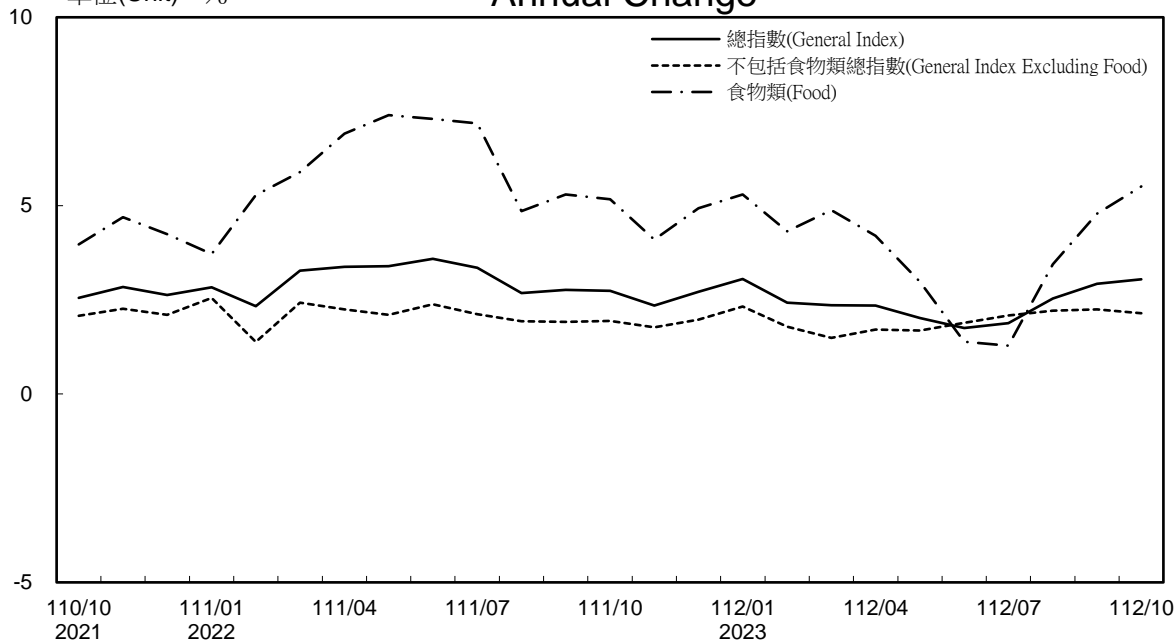
指數基期：民國110年=100 (Indices Base Period : 2021=100)



## 年增率

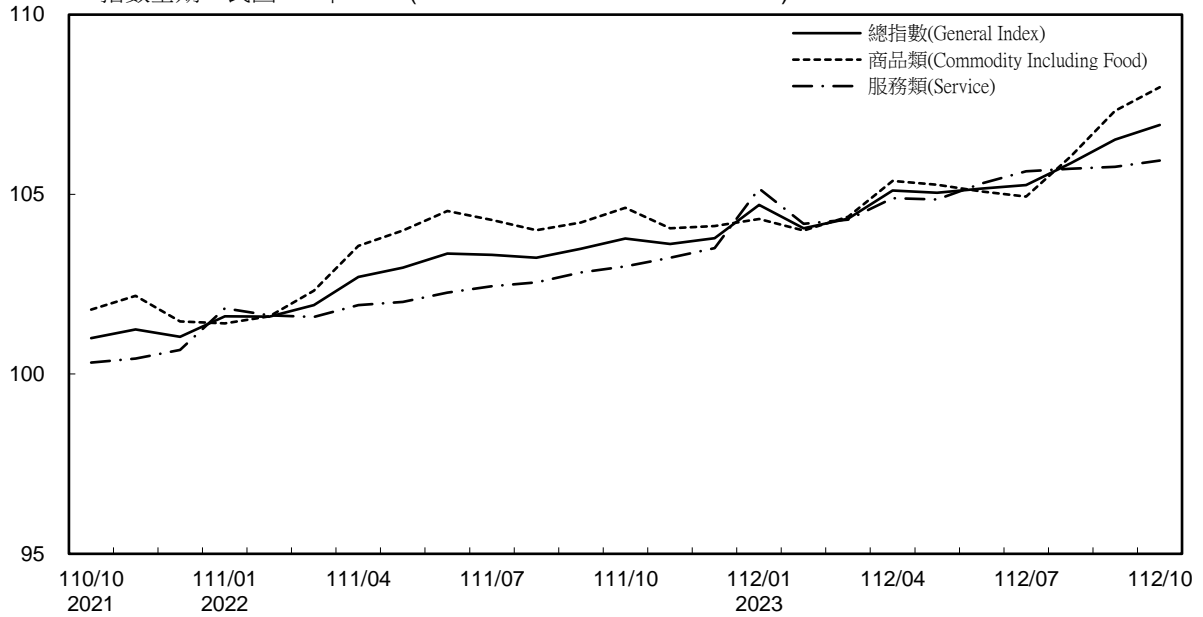
## Annual Change

單位(Unit)：%



# 消費者物價指數及變動率圖(續) Trends of Consumer Price Indices (Cont.)

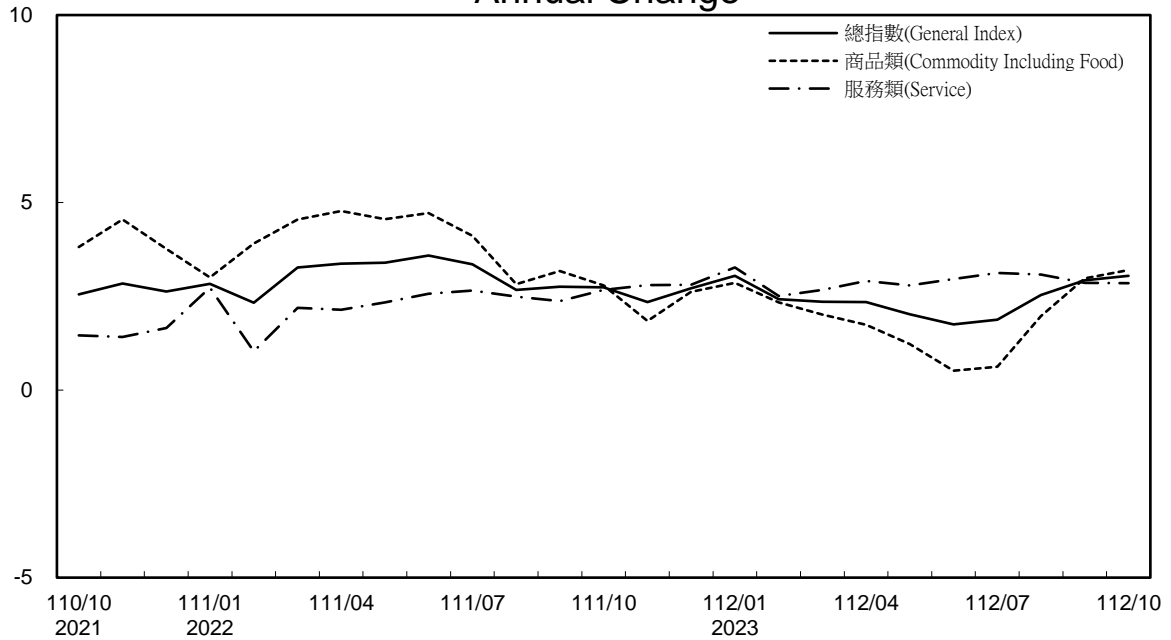
指數基期：民國110年=100 (Indices Base Period : 2021=100)



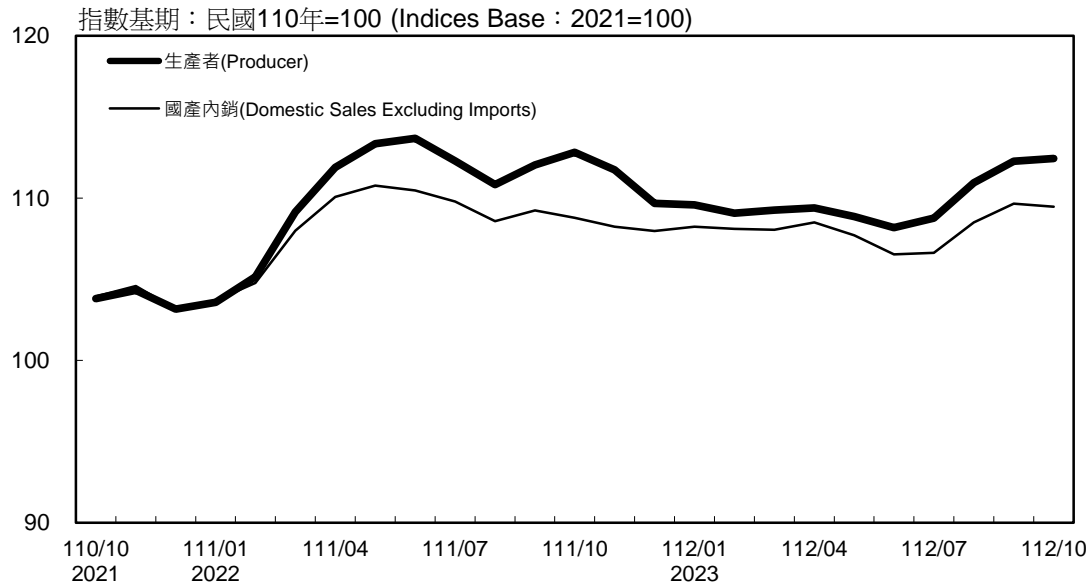
## 年增率

單位(Unit) : %

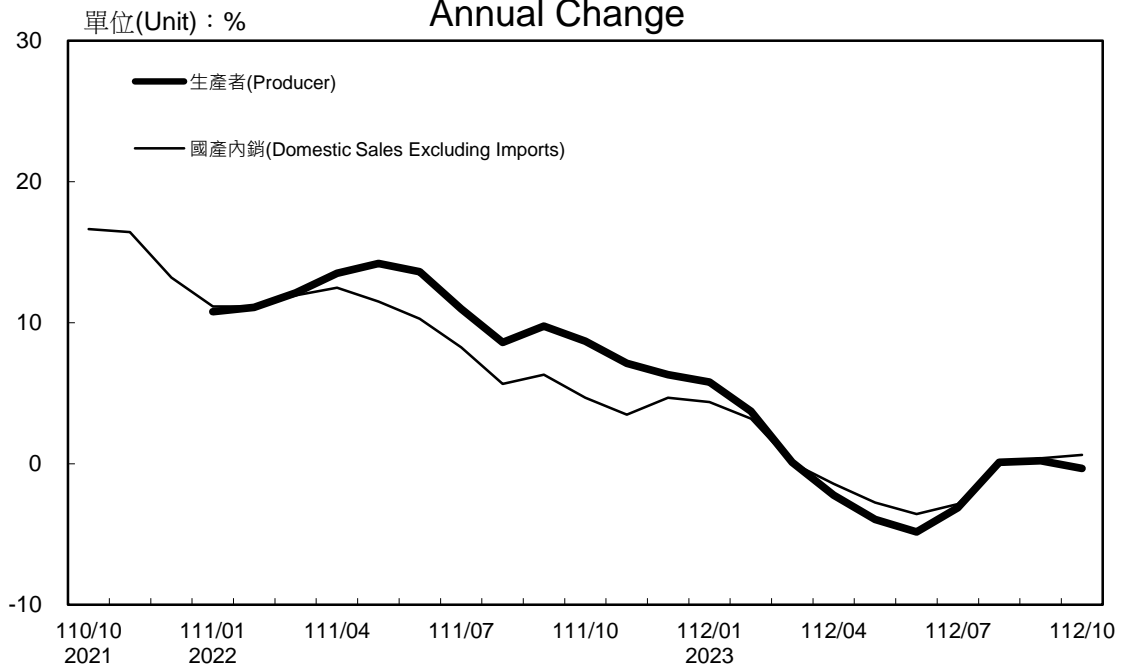
## Annual Change



### 生產者、國產內銷物價指數及變動率圖 Trends of Producer & Domestic Sales Excluding Imports Price Indices



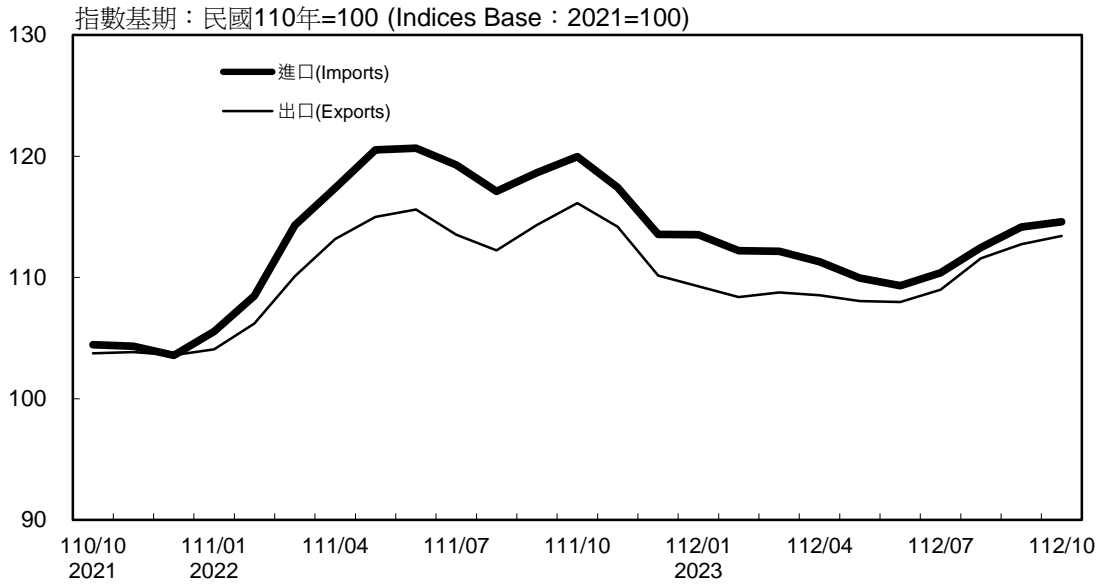
### 年增率 Annual Change



附註：生產者物價指數自 110 年 1 月開始編布，爰自 111 年 1 月起始得計算年增率。

### 進、出口物價指數及變動率圖 (以新臺幣計價)

#### Trends of Import & Export Price Indices (on NTD Basis)



### 年增率

#### Annual Change

