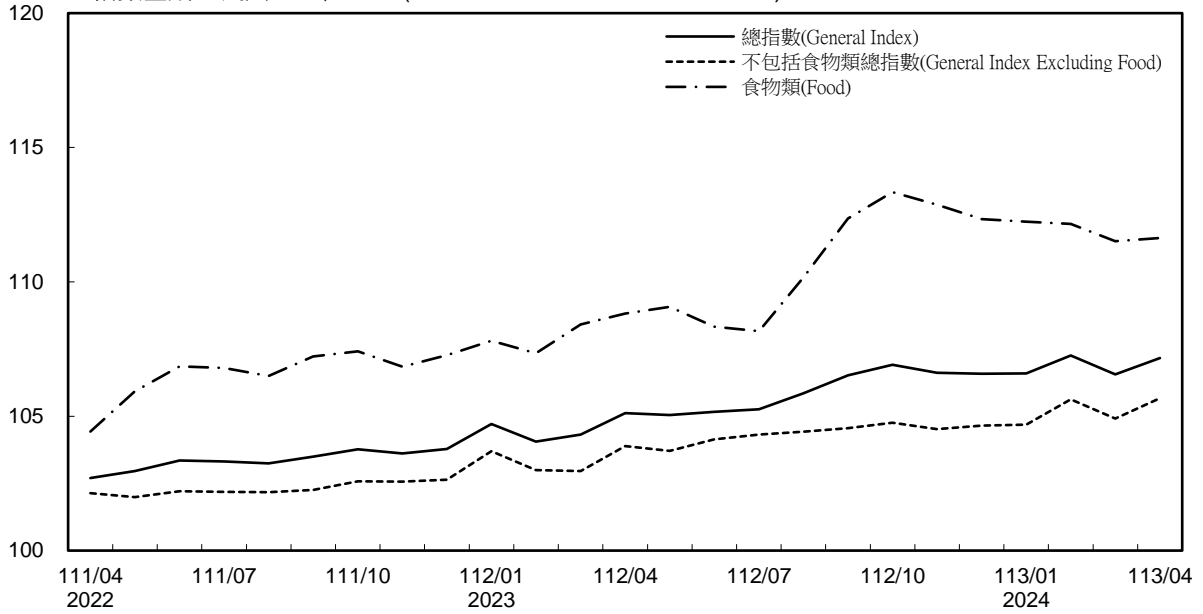


# 消費者物價指數及變動率圖 Trends of Consumer Price Indices

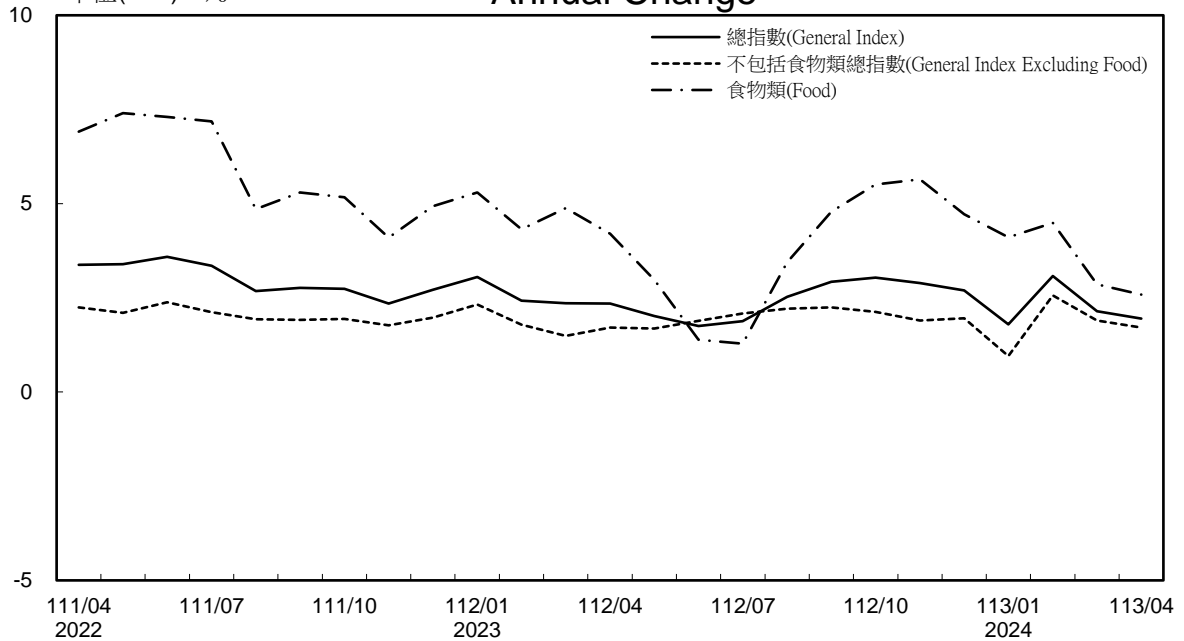
指數基期：民國110年=100 (Indices Base Period : 2021=100)



## 年增率

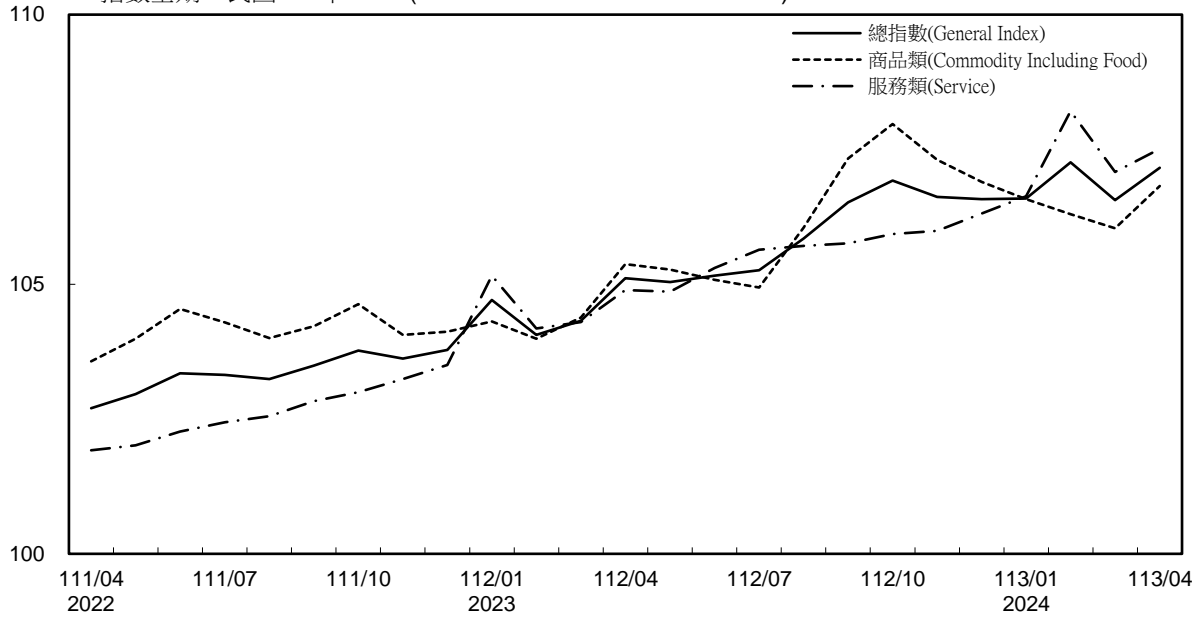
## Annual Change

單位(Unit) : %



## 消費者物價指數及變動率圖(續) Trends of Consumer Price Indices (Cont.)

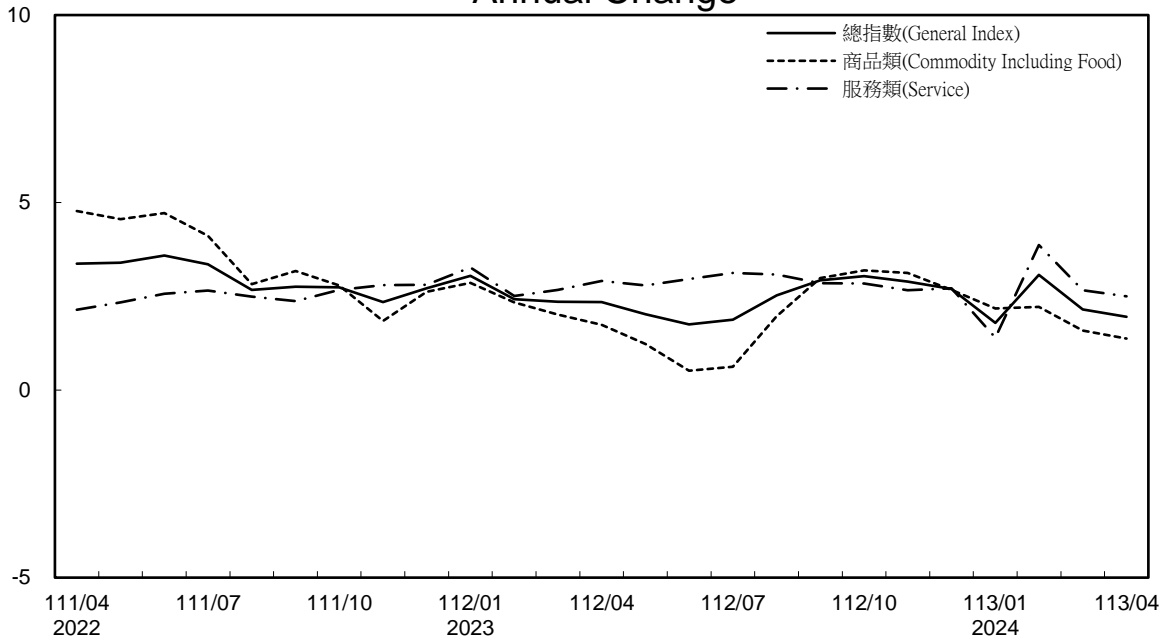
指數基期：民國110年=100 (Indices Base Period : 2021=100)



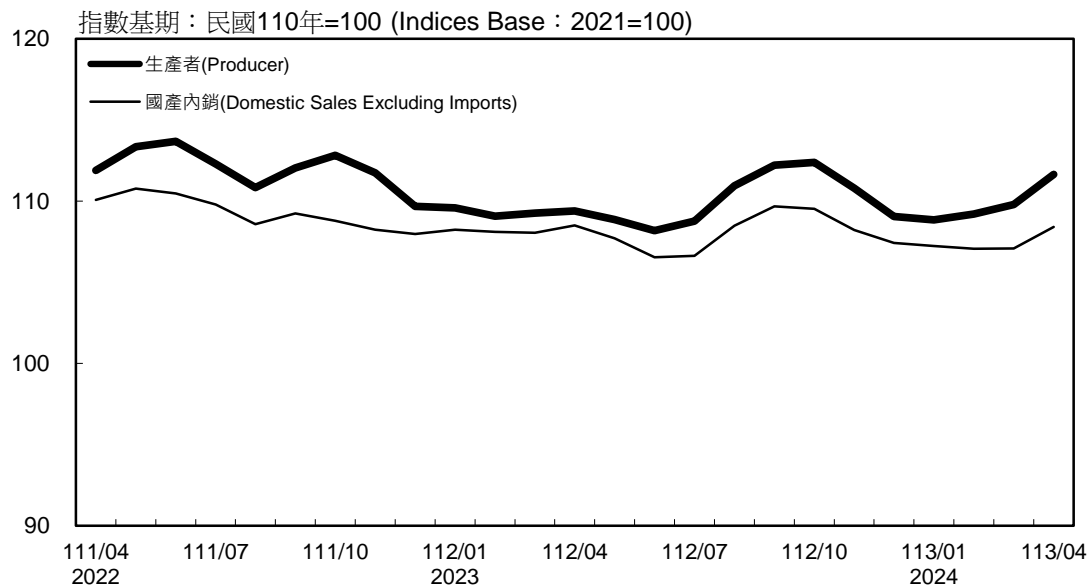
### 年增率

單位(Unit) : %

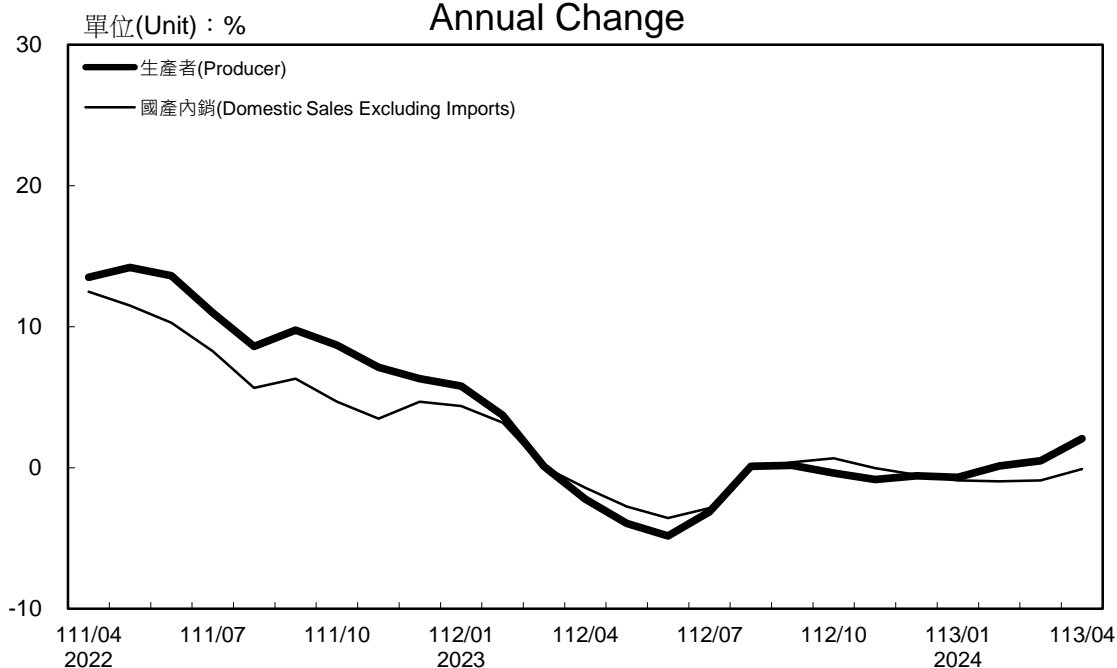
### Annual Change



### 生產者、國產內銷物價指數及變動率圖 Trends of Producer & Domestic Sales Excluding Imports Price Indices

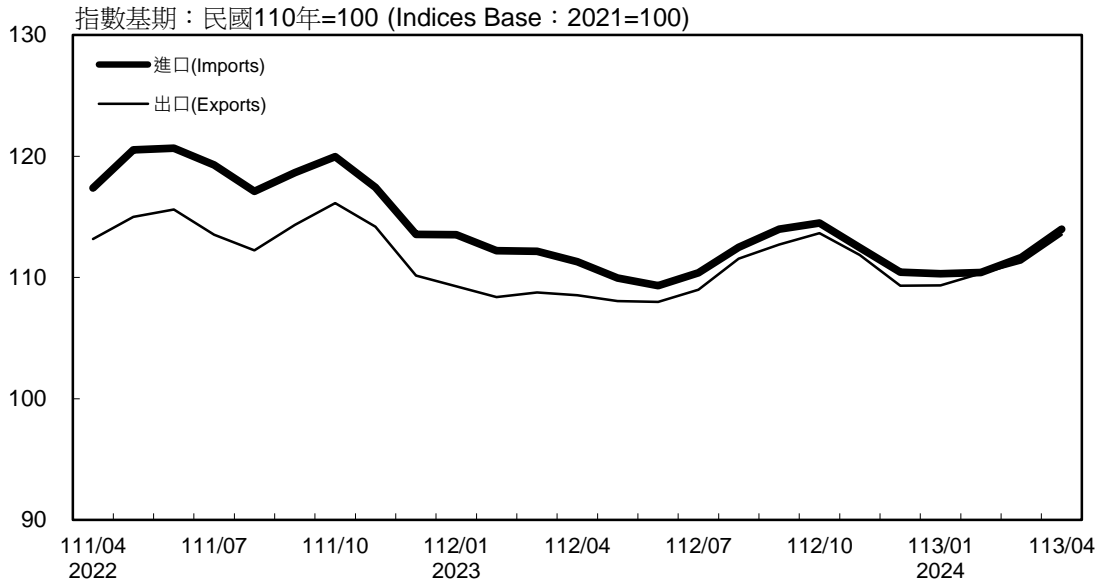


### 年增率 Annual Change



### 進、出口物價指數及變動率圖 (以新臺幣計價)

### Trends of Import & Export Price Indices (on NTD Basis)



### 年增率

### Annual Change

