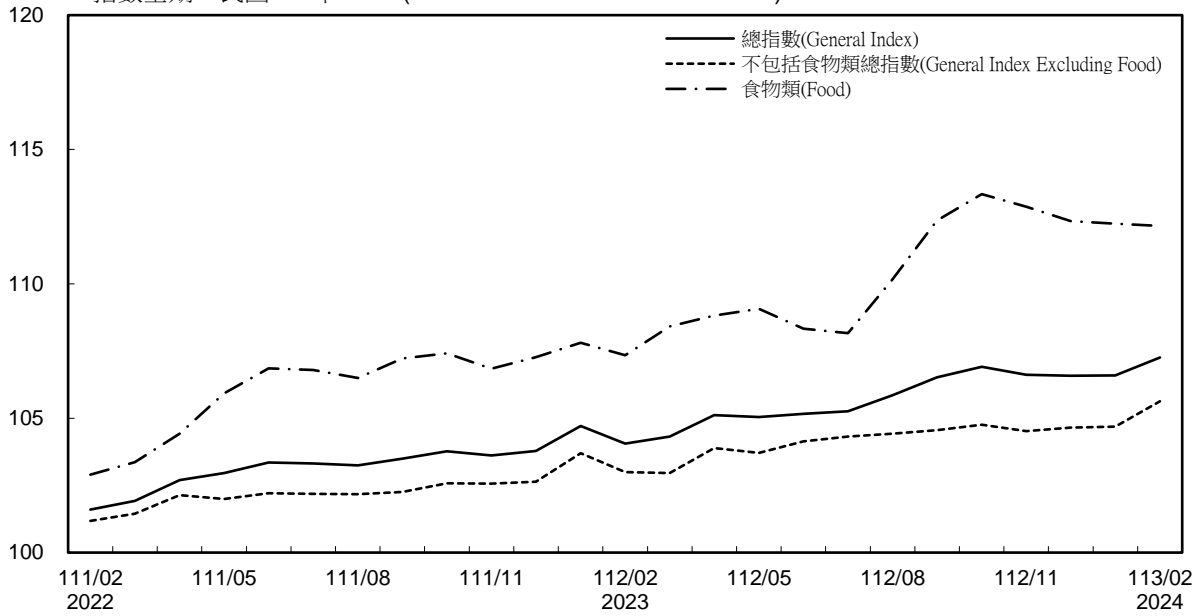


消費者物價指數及變動率圖 Trends of Consumer Price Indices

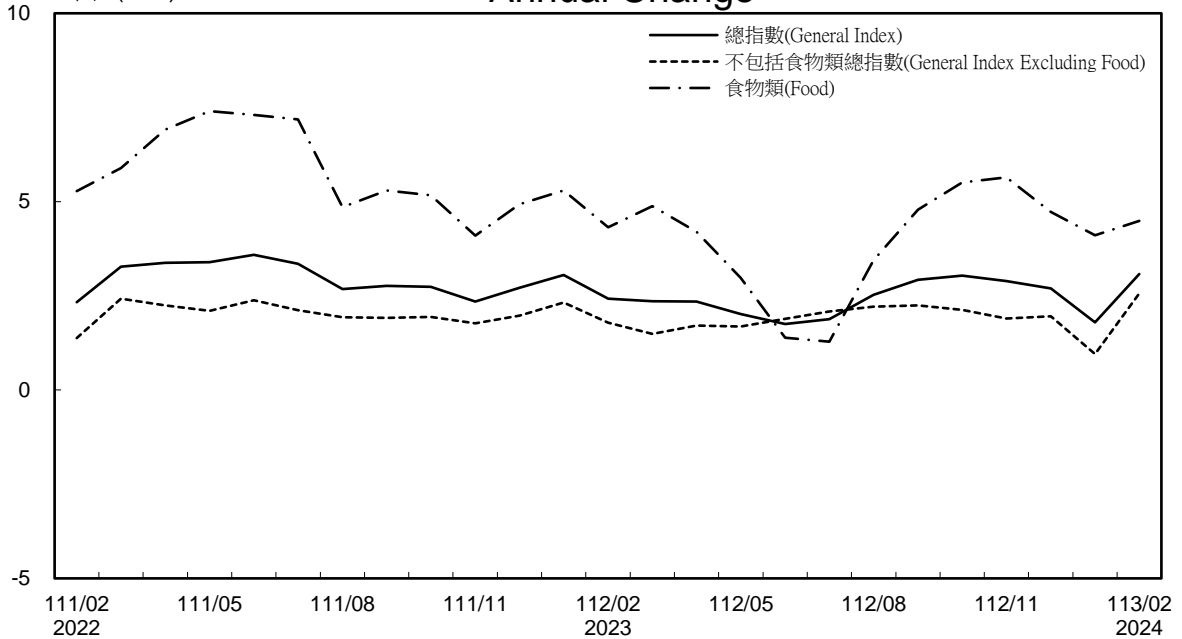
指數基期：民國110年=100 (Indices Base Period : 2021=100)



年增率

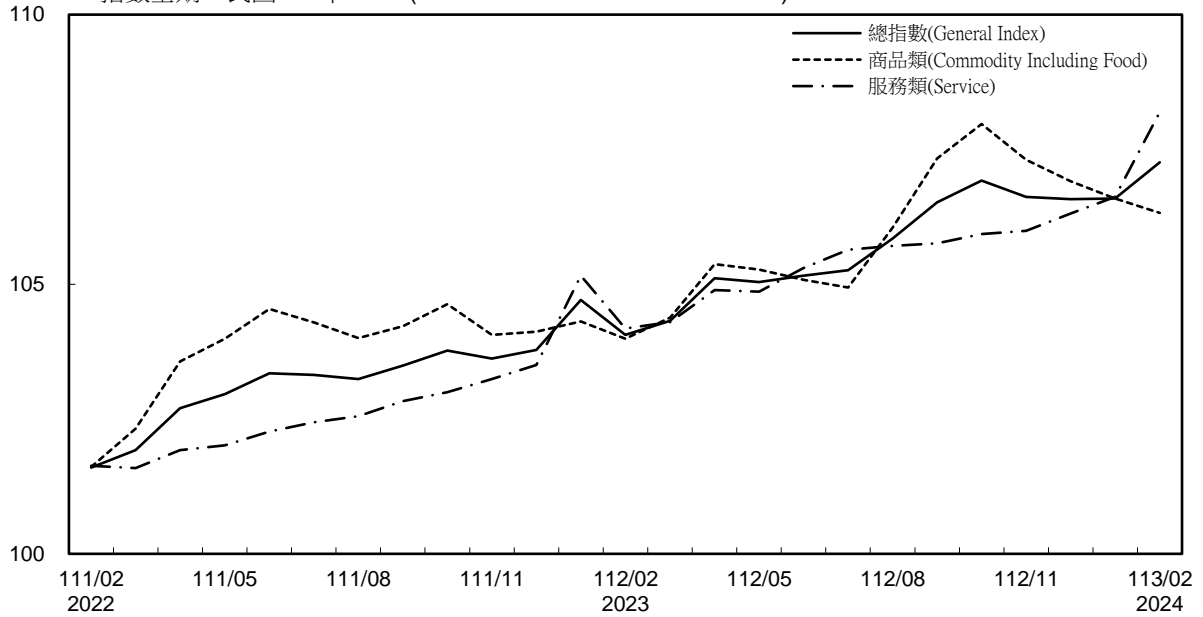
Annual Change

單位(Unit) : %



消費者物價指數及變動率圖(續) Trends of Consumer Price Indices (Cont.)

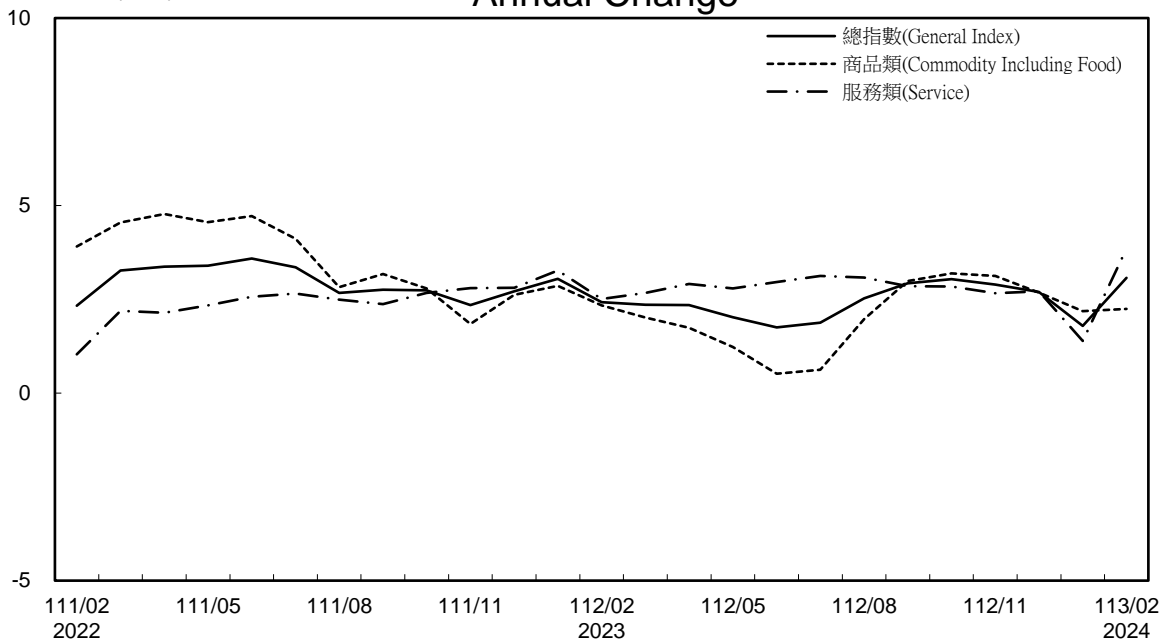
指數基期：民國110年=100 (Indices Base Period : 2021=100)



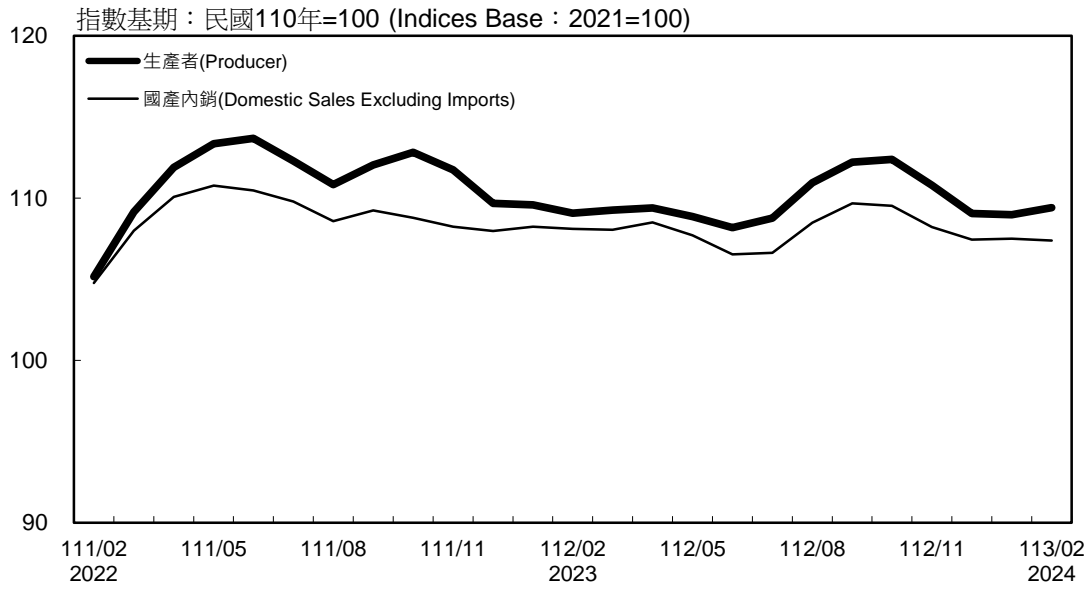
年增率

Annual Change

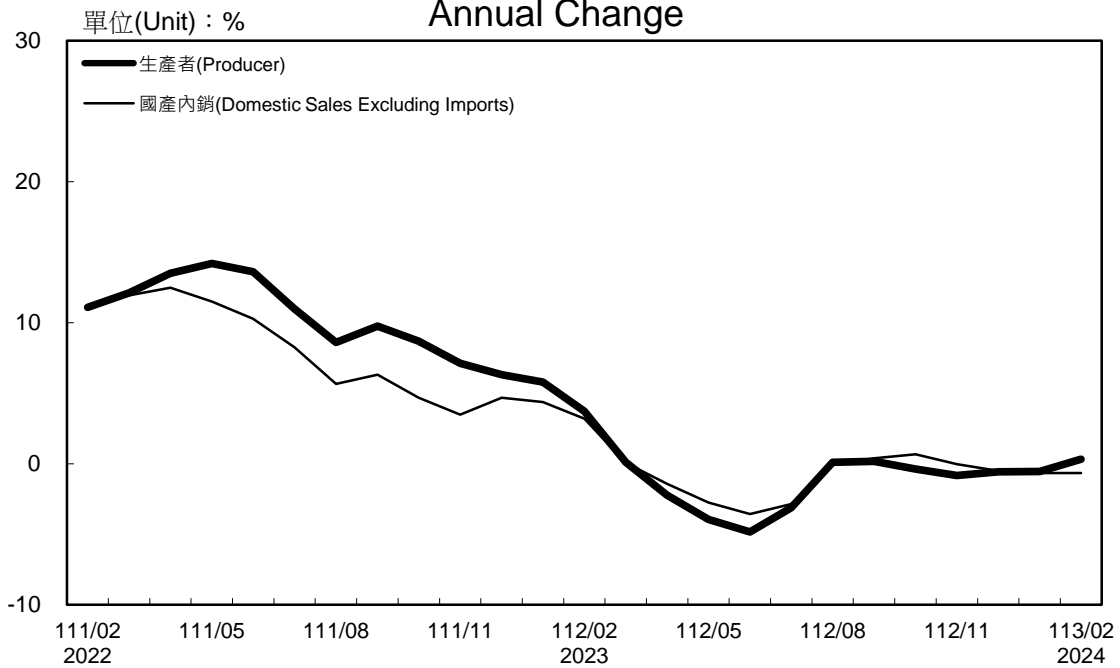
單位(Unit) : %



生產者、國產內銷物價指數及變動率圖 Trends of Producer & Domestic Sales Excluding Imports Price Indices

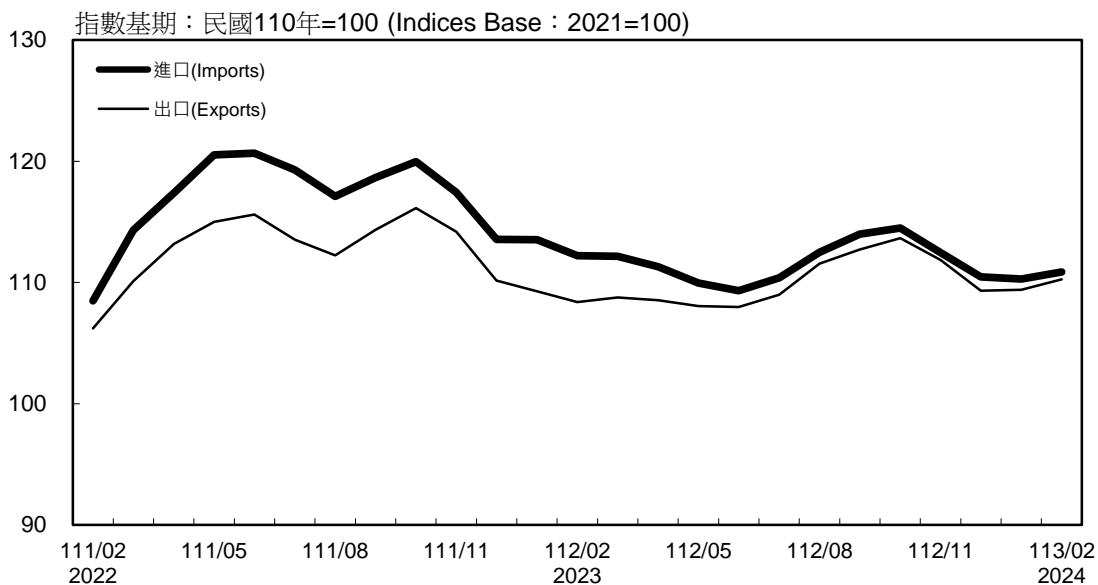


年增率 Annual Change



進、出口物價指數及變動率圖 (以新臺幣計價)

Trends of Import & Export Price Indices (on NTD Basis)



年增率

Annual Change

