



News Release

8:30 am (GMT +8)

July 5 2013

DGBAS, Taipei

The Price Indices for June 2013

Consumer Price Indices (CPI)

The CPI in June 2013 (2011=100) increased 0.50% from the preceding month, mainly because summer electricity rates dragged electricity fee up. Meanwhile, prices of vegetables rose 7.25%. However, prices of eggs, fruits and clothing decreased 7.81%, 4.38% and 2.14%. The general CPI excluding fruits, vegetables and energy, i.e. core CPI, rose 0.12%.

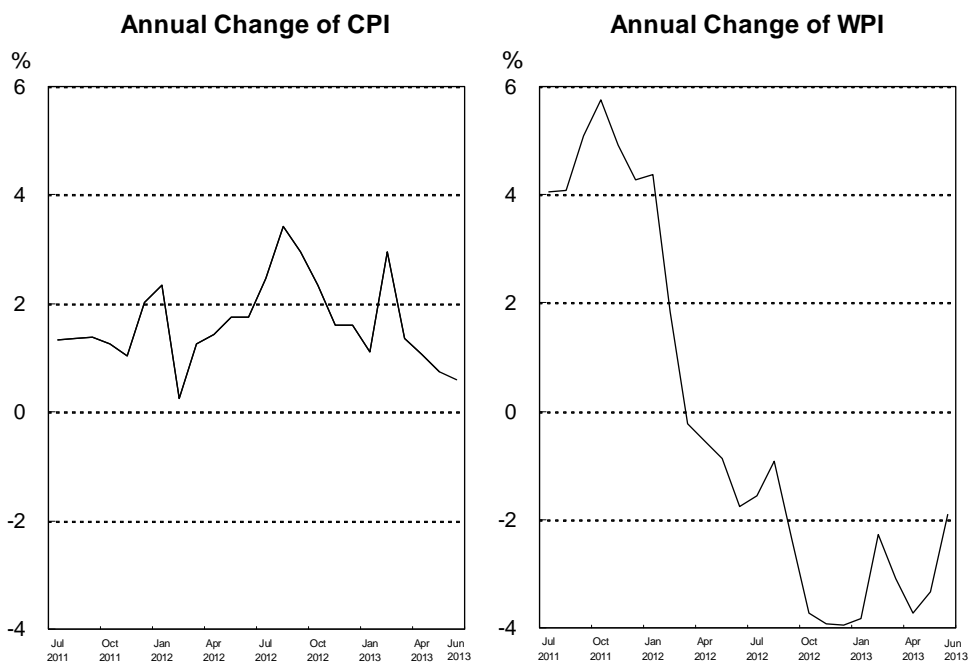
The annual change of CPI in June 2013 compared with the same month of previous year was 0.60%, mainly because prices of vegetables and meat went up 5.15% and 4.05%. In addition, prices of food away from home, medical care services and fuel and lubricants still stayed high. Whereas internet service charges and consumer electronics products prices decreased to offset some percentage of raise. The core CPI moved up 0.59%.

Wholesale Price Indices (WPI)

The WPI in June 2013 advanced 0.40% from the preceding month, mainly because prices of water supply, electricity & gas, petroleum & coal products and chemical material went up 4.89%, 1.37% and 0.69% respectively. Conversely, prices of basic metals decreased 1.89%.

The annual change of WPI in June 2013 compared with the same month of 2012 was minus 1.90%, mainly because prices of quarrying products & other mineral products, basic metals and electronic parts and components

went down 12.66%, 8.90% and 1.44% orderly, while prices of chemical materials advanced 3.29%. The WPI for domestic sales excluding imports decreased 1.47%, import price index moved down 3.23% and export price index declined 1.24%.



Statistical Tables

Table1 The Changes of Consumer Price Indices

Table2 The Changes of Wholesale Price Indices

Table3 The Changes of Import Price Indices

Table4 The Changes of Export Price Indices

For Further Information:

Statistics Database: <http://eng.stat.gov.tw/>

DGBAS news releases on the Internet: <http://eng.dqbas.gov.tw/>

Tel: +886-2-23803449; Fax: +886-2-23803465