



## **News Release**

8:30 am (GMT +8)

March 5 2014

DGBAS, Taipei

### **The Price Indices for February 2014**

#### **Consumer Price Indices (CPI)**

The CPI in February 2014 (2011=100) decreased 0.40% from the preceding month, mainly because prices of services for nursery and nursing care and vegetables went down 33.49% and 5.41% after Lunar New Year festival and prices of garments declined 4.55% on winter clothing discount. However, prices of cereals, cereal products and meats moved up. The general CPI excluding fruits, vegetables and energy, i.e. core CPI, decreased 0.29%.

The annual change of CPI in February 2014, compared with the same month of 2013, fell 0.05%. Due to the distortions from the timing of Chinese New Year, prices of services for nursery and nursing care, tour fees and taxi fees dropped from relatively high bases last year. Furthermore, communication fees and prices of fuels and lubricants declined 3.90% and 2.05%. Whereas, prices of fruits, meats, and fish and seafood rose 10.01%, 6.18%, and 4.53%. The core CPI decreased 0.20%.

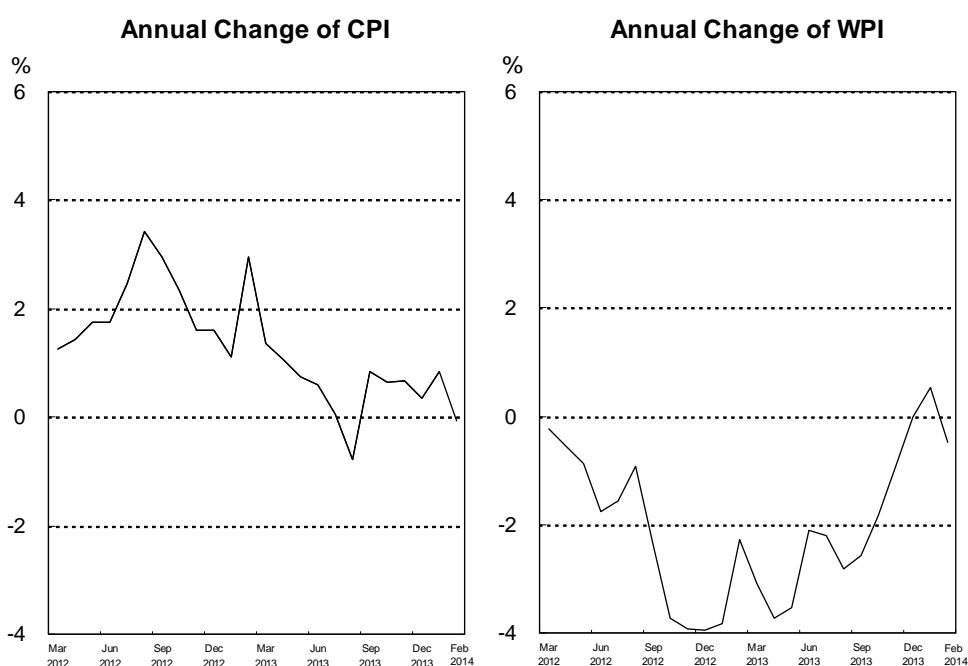
To exclude the distortions of Lunar New Year effect, the CPI increased 0.39% over the same period of previous year for the first two months of 2014. Among which, prices of food rose 1.75% but prices of transportation and communication fell 1.47%. The core CPI increased 0.41%.

#### **Wholesale Price Indices (WPI)**

The WPI in February 2014 increased 0.40% from the preceding month, mainly because prices of machinery and equipment, electronic parts and components, and chemical materials moved up 1.10%, 0.58%, and 0.31% individually.

The annual change of WPI in February 2014, compared with the same month of 2013, went down 0.48%, mainly because prices of basic metals and chemical material decreased 5.52% and 3.59%, however, prices of electronic parts and components and electricity rose. The WPI for domestic sales excluding imports moved down 0.08%, import price index declined 1.47%, and export price index went up 0.10%.

For the first two months of 2014, the WPI increased 0.03% over the same period of previous year.



### Statistical Tables

Table1 The Changes of Consumer Price Indices

Table2 The Changes of Wholesale Price Indices

Table3 The Changes of Import Price Indices

Table4 The Changes of Export Price Indices

### For Further Information:

Statistics Database: <http://eng.stat.gov.tw/>

DGBAS news releases on the Internet: <http://eng.dgbas.gov.tw/>

Tel: +886-2-23803449; Fax: +886-2-23803465