

The Price Indices for July 2016

Consumer Price Indices (CPI)

The CPI in July 2016 (2011=100) increased 0.22% from the preceding month, mainly because prices of vegetables rose 8.46%, and prices of entertainment expenses went up 3.27%. However, prices of fruits decreased 3.07%, prices of garments declined 2.78%, and prices of fuels and lubricants moved down 2.30%. The general CPI excluding fruits, vegetables and energy, i.e. core CPI, advanced 0.17%.

The annual change of CPI in July 2016, compared with the same month of 2015, moved up 1.23%. Prices of fruits, vegetables and food away from home rose 35.50%, 16.14% and 1.45% respectively. Prices of fish and seafood also advanced 4.76%. However, prices of water, electricity and gas supply declined 10.99%, and prices of fuels and lubricants went down 6.77%. The core CPI increased 0.79%.

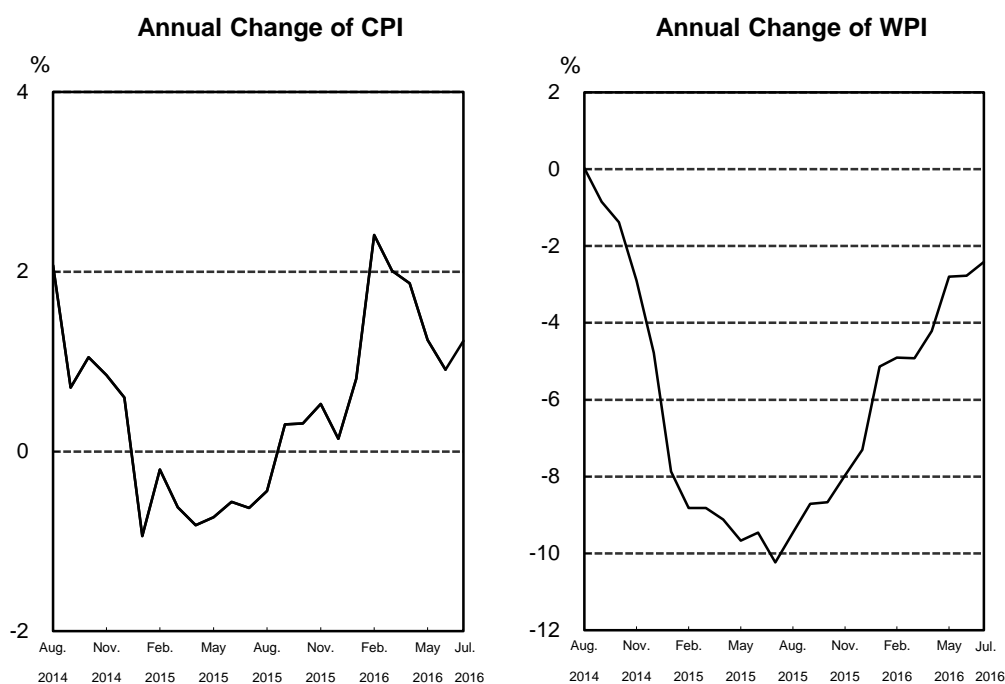
For the first seven months of 2016, the CPI advanced 1.51% over the same period of previous year. Prices of commodity moved up 2.47%, and prices of service rose 0.80%. The core CPI increased 0.81%.

Wholesale Price Indices (WPI)

The WPI in July 2016 decreased 0.57% from the preceding month. Prices of crude petroleum and natural gas moved down 5.76%, and prices of petroleum and coal products fell 2.63%. Prices of electronic parts and components went down 0.76%. Moreover, prices of computers and electronic and optical products declined 0.64%, and prices of machinery and equipment decreased 0.52%. Nonetheless, prices of fishery products went up 3.70%, and prices of basic metals rose 0.68%.

The annual change of WPI in July 2016, compared with the same month of 2015, decreased 2.41%. Prices of crude petroleum and natural gas dropped 19.82%, prices of petroleum and coal products went down 17.69%, and prices of chemical materials fell 9.20%. Furthermore, prices of water supply, electricity and gas moved down 13.08%. However, prices of farm products increased 15.62%, and prices of machinery and equipment rose 4.52%. The WPI for domestic sales excluding imports decreased 3.20%, import price index fell 2.32%, and export price index declined 1.84%.

For the first seven months of 2016, the WPI decreased 3.89% over the same period of previous year.



Statistical Tables

- Table1 The Changes of Consumer Price Indices
- Table2 The Changes of Wholesale Price Indices
- Table3 The Changes of Import Price Indices
- Table4 The Changes of Export Price Indices

For Further Information:

Statistics Database: <http://eng.stat.gov.tw/>

DGBAS news releases on the Internet: <http://eng.dgbas.gov.tw/>

Tel: +886-2-23803449; Fax: +886-2-23803465