



## **News Release**

8:30 am (GMT +8)

Nov. 8 2016

DGBAS, Taipei

### **The Price Indices for October 2016**

#### **Consumer Price Indices (CPI)**

The CPI in October 2016 (2011=100) increased 1.45% from the preceding month. Due to the influence of typhoons and heavy rainfall, prices of vegetables rose 36.53%. Prices of garments moved up 17.19% for new seasonal products available in the market. Prices of fuels and lubricants advanced 3.18%, and prices of fruits rose 2.96%. The termination of application for summer electricity rate brought prices of water, electricity and gas supply decreasing 10.62%. The general CPI excluding fruits, vegetables and energy, i.e. core CPI, advanced 0.53%.

The annual change of CPI in October 2016, compared with the same month of 2015, moved up 1.70%. Prices of vegetables and fruits advanced 24.20% and 7.83%. Prices of fish and seafood went up 6.85%, and prices of meats rose 2.49%. Consequently, prices of food away from home went up 1.41%. However, prices of water, electricity and gas supply declined 8.23% to offset the rise. The core CPI rose 0.96%.

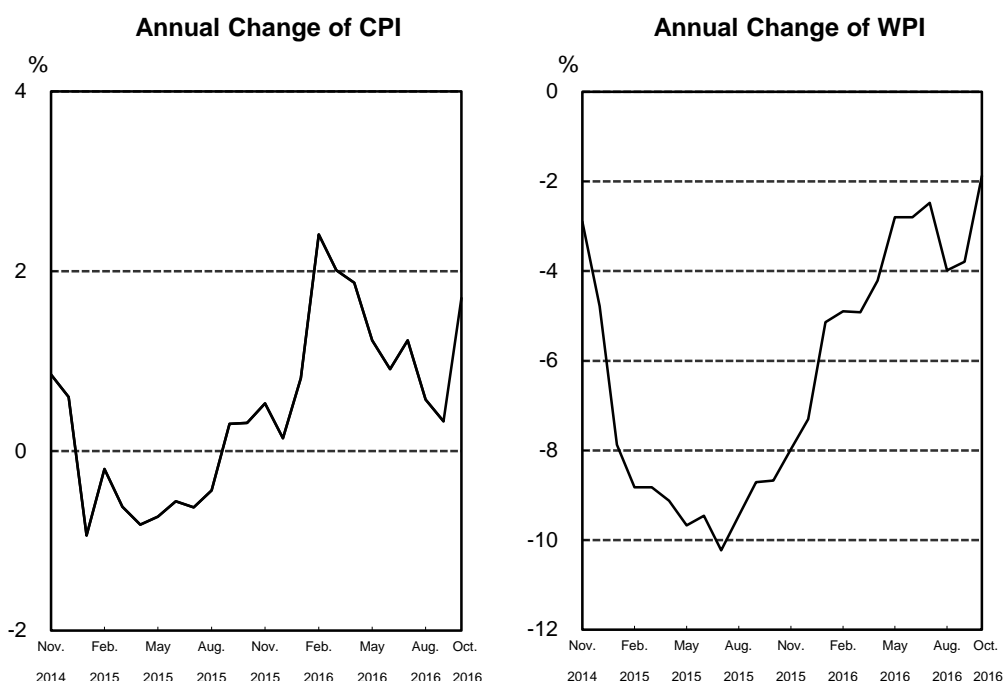
For the first ten months of 2016, the CPI advanced 1.30% over the same period of previous year. Prices of commodity moved up 2.01%, and prices of service rose 0.80%. The core CPI increased 0.84%.

#### **Wholesale Price Indices (WPI)**

The WPI in October 2016 increased 0.77% from the preceding month. Prices of farm products went up 16.17%, and prices of crude petroleum and natural gas rose 10.04%. Prices of petroleum and coal products rose 5.87%, and prices of chemical materials advanced 1.05%. However, prices of water supply, electricity and gas moved down 5.75%.

The annual change of WPI in October 2016, compared with the same month of 2015, decreased 1.88%. Prices of water supply, electricity and gas moved down 9.92%, and prices of petroleum and coal products fell 4.93%. Prices of computers and electronic and optical products declined 4.51%, and prices of electronic parts and components went down 3.68%. However, prices of farm products increased 7.26%, and prices of basic metals rose 2.41%. The WPI for domestic sales excluding imports decreased 0.42%, import price index fell 1.83%, and export price index declined 3.07%.

For the first ten months of 2016, the WPI decreased 3.71% over the same period of previous year.



### Statistical Tables

Table1 The Changes of Consumer Price Indices

Table2 The Changes of Wholesale Price Indices

Table3 The Changes of Import Price Indices

Table4 The Changes of Export Price Indices

### For Further Information:

Statistics Database: <http://eng.stat.gov.tw/>

DGBAS news releases on the Internet: <http://eng.dgbas.gov.tw/>

Tel: +886-2-23803449; Fax: +886-2-23803465