

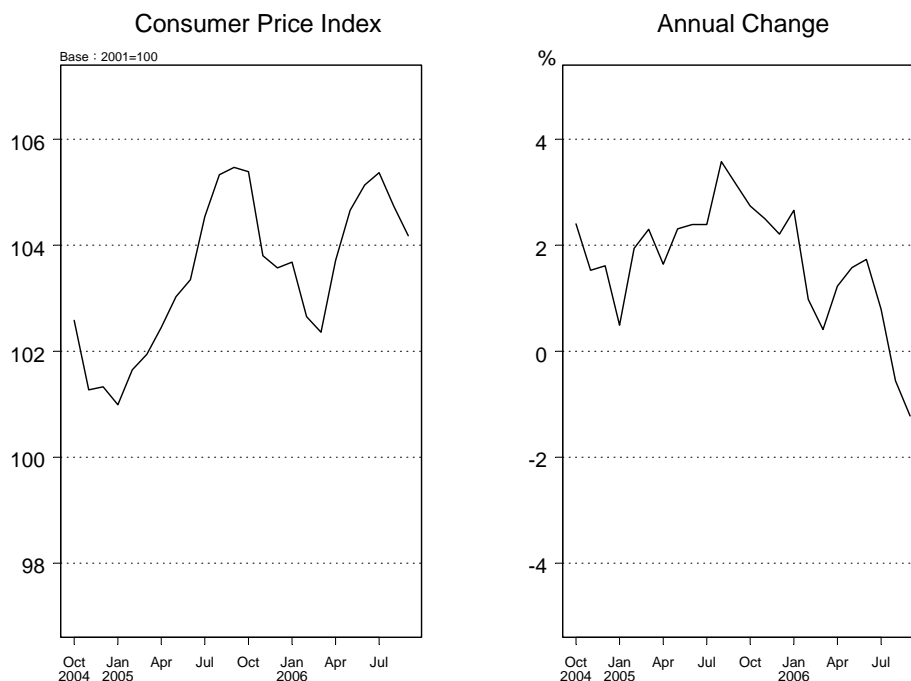
The Price Indices for September 2006

Consumer Price Indices (CPI)

The CPI in September 2006 was 104.18 (2001=100), down 0.53% from last month, due mainly to 2.13%, 1.45% and 0.62% falls of Clothing, Food and Transportation & Communication prices.

The CPI in September 2006 declined to 1.22% compared with the same month of last year, due mainly to Food prices decreased 6.60%, of which Vegetables and Fruits fell 33.43% and 7.70% individually.

For the first nine months of 2006, the CPI increased 0.83% compared with the same period of last year, as prices of Commodity and Service rose 1.00% and 0.65% respectively. The General Index excluding Fruits, Vegetables, Fish, Shellfish and Energy, i.e. core CPI, was up 0.53%.



Wholesale Price Indices (WPI)

The WPI in September 2006 was 120.83 (2001=100), down 0.17% from last month, due mainly to prices of Energy Minerals, Petroleum & Coal Products declined to 9.56% and 2.33% respectively.

The WPI in September 2006 rose 6.69% compared with the same month of last year, due mainly to prices of Primary Metal Products and Chemicals increased 30.72% and 15.60% individually.

For the first nine months of 2006, the WPI increased 5.47% compared with the same period of last year, of which the Import Price Index and Export Price Index rose 9.37% and 2.44% respectively.



Statistical Tables

Table1 The Changes of Consumer Price Indices

Table2 The Changes of Wholesale Price Indices

Table3 The Changes of Import Price Indices

Table4 The Changes of Export Price Indices

For Further Information:

Statistics Database: <http://eng.stat.gov.tw/>

DGBAS news releases on the Internet: <http://eng.dgbas.gov.tw/>

Tel: +886-2-23803449; Fax: +886-2-23803465

Table 1 The Changes of Consumer Price Indices

Sept. 2006

Groups	Weight (%)	Index of Sept. 2006 (2001=100)	Compared with Last Month (%)	Compared with the Same Month of Last Year (%)	The First Nine Months of 2006 Compared with the Same Period of Last Year (%)
General Index	1,000.00	104.18	-0.53	-1.22	0.83
Basic Group					
1. Food	250.54	111.64	-1.45	-6.60	0.30
Meat	25.17	113.40	0.45	-0.26	-1.17
Fish & Shellfish	16.73	112.16	0.43	1.77	-0.42
Vegetables	27.89	135.79	-11.00	-33.43	-7.77
Fruits	27.94	109.02	-1.75	-7.70	8.38
2. Clothing	47.46	94.92	-2.13	-2.72	-2.81
Garments	32.52	90.20	-2.99	-5.17	-5.13
3. Housing	307.94	99.60	0.22	0.99	0.71
Residential Rent	210.96	97.65	0.04	0.25	0.16
Water, Electricity & Gas Supply	37.37	113.59	1.10	6.48	3.39
4. Transportation & Communication	126.25	104.49	-0.62	1.36	1.59
Oils	22.63	142.19	-1.97	10.22	12.04
Communication Services	77.27	97.67	-0.19	-1.25	-0.80
5. Medicines & Medical Care	37.37	114.67	0.07	1.11	4.05
Medical Care Services	24.96	120.96	0.00	1.40	5.59
6. Education & Entertainment	161.11	98.70	-0.42	-0.06	0.24
Educational Expense	118.75	100.14	0.10	-0.16	0.52
7. Miscellaneous	69.33	109.24	0.52	4.30	3.95
Personal Care Services	14.01	101.45	0.00	0.70	0.70
Commodity and Service Groups					
1. Commodity	528.52	107.23	-0.83	-2.31	1.00
(Excluding Food)	277.97	103.24	-0.22	2.31	1.69
Non-durable Consumer Goods	384.36	112.87	-0.88	-2.51	2.07
(Excluding Food)	133.81	115.36	0.17	5.93	5.52
Semi-durable Consumer Goods	62.59	94.53	-1.33	-2.42	-2.82
Durable Consumer Goods	81.57	89.11	-0.13	-1.07	-1.91
2. Service	471.48	100.76	-0.16	0.13	0.65
Housing	237.03	97.49	0.04	-0.16	0.12
Transportation & Communication	74.10	97.57	-0.19	-1.36	-0.90
Medical Care	24.69	121.62	0.00	1.41	5.64
Education & Entertainment	104.85	105.31	-0.60	1.27	1.54
Miscellaneous	30.81	100.47	0.00	0.60	0.52
Special Groups					
General Index Excluding Fruits & Vegetables	944.17	103.18	-0.03	0.91	0.94
General Index Excluding Food	749.46	101.69	-0.19	0.93	1.03
General Index Excluding Fruits, Vegetables, Fish, Shellfish & Energy	873.10	101.55	-0.02	0.36	0.53

Note :Due to late reports and corrections by respondents all data are subject to revision 3 months after original publication.

Table 2 The Changes of Wholesale Price Indices

Sept. 2006

Groups	Weight (%)	Index of Sept. 2006 (2001=100)	Compared with Last Month (%)	Compared with the Same Month of Last Year (%)	The First Nine Months of 2006 Compared with the Same Period of Last Year (%)
General Index	1,000.00	120.83	-0.17	6.69	5.47
General Index Excluding Import & Export	360.47	128.97	0.58	8.37	4.45
Import	310.71	131.68	-1.55	7.33	9.37
Export	328.82	101.64	0.46	3.67	2.44
Basic Group					
1. Agriculture, Forestry, Livestock & Fishery	39.30	119.43	0.45	-7.93	-2.98
(1) Farm Products	19.89	119.03	4.78	-12.36	-1.81
(2) Forest Products	0.51	161.52	-1.64	9.74	5.64
(3) Livestock & Poultry	9.66	125.40	-0.18	-3.40	-9.41
(4) Aquatic Products	9.24	110.25	-7.29	-3.49	1.92
2. Minerals Products	37.73	235.59	-7.92	7.97	26.02
(1) Energy Minerals	30.16	240.99	-9.56	4.84	25.93
(2) Sand, Gravel & Crushed Stone	3.71	210.07	0.19	39.17	29.32
3. Manufacturing Products	889.18	116.08	0.51	7.29	4.43
(1) Food & Beverages	38.61	117.95	0.32	3.54	2.87
(2) Tobaccos	4.66	148.42	0.06	10.36	7.94
(3) Textile Products	37.11	106.57	0.92	2.97	1.43
(4) Ready-made Apparel & Accessories	12.22	90.66	0.24	-0.37	1.09
(5) Hides, Skins, Leather & Related Products	8.47	105.83	0.68	3.29	3.22
(6) Lumber & Wood Products	3.56	111.58	0.46	3.78	3.13
(7) Furniture & Fixture	8.76	110.90	0.49	2.20	2.07
(8) Pulp, Paper, Paper Products & Printed	21.45	106.26	0.37	2.63	1.03
(9) Chemicals	63.87	192.72	0.75	15.60	7.58
(10) Chemical Products	30.02	98.25	0.23	0.72	1.53
(11) Petroleum & Coal Products	41.01	184.75	-2.33	13.67	21.94
(12) Rubber & Plastic Products	31.42	113.16	1.14	3.60	2.54
(13) Nonmetallic Mineral Products	14.80	117.72	0.10	5.64	1.74
(14) Primary Metal Products	57.25	232.39	2.47	30.72	14.36
(15) Metal Products	30.52	134.98	-0.09	8.44	-0.06
(16) Machinery	60.94	100.20	-0.01	-0.34	0.45
(17) Computer, Communication Eq., Audio & Video Equipment	129.17	63.40	0.17	-7.88	-5.22
(18) Electronic Components & Accessories	176.39	77.02	0.90	-0.35	-1.74
(19) Electrical Equipments & Apparatus	41.65	129.68	0.08	20.32	16.74
(20) Transportation Equipment & Parts	45.15	99.01	0.03	-0.14	-0.70
(21) Precision Instruments	19.24	97.32	0.69	0.66	1.05
(22) Miscellaneous Products	12.91	106.64	0.29	0.98	3.18
4. Water Supply, Electricity & Gas	33.79	116.42	0.70	8.77	3.65
By Stage of Processing					
1. Raw Materials	61.00	194.63	-5.64	6.78	17.50
2. Intermediate Materials	413.28	133.69	0.58	11.91	6.92
3. Finished Goods	196.90	101.82	0.21	-1.31	0.52
(1) Capital Goods	68.55	91.94	0.11	-1.01	-0.53
(2) Consumer Goods	128.35	106.86	0.25	-1.46	1.00
Special Groups					
General Index Excluding Exports	671.18	130.10	-0.41	7.88	6.68
General Index Excluding Imports	689.29	116.15	0.54	6.37	3.60
Non Heavy Chemical Industrial Products	211.51	107.65	0.50	2.75	2.25
Heavy Chemical Industrial Products	677.67	118.75	0.51	8.68	5.10

Note: Due to late reports and corrections by respondents all data are subject to revision 3 months after original publication.

Table 3 The Changes of Import Price Indices

Sept. 2006

Groups	Weight (%)	Index of Sept. 2006 (2001=100)	Compared with Last Month (%)	Compared with the Same Month of Last Year (%)	The First Nine Months of 2006 Compared with the Same Period of Last Year (%)
Basic Group (on N.T.D. Basis)					
General Index	1,000.00	131.68	-1.55	7.33	9.37
1. Animal, Vegetable Products & Prepared Foods	47.60	131.17	1.31	10.45	5.45
2. Mineral Products	134.52	230.74	-7.94	6.42	26.04
3. Textiles & Textile Articles	23.09	106.91	0.14	0.30	1.73
4. Wood, Paper, Pulp & Articles Thereof	25.78	122.52	0.84	6.24	4.04
5. Chemicals, Plastics, Rubber & Articles Thereof	133.44	145.32	0.12	8.29	5.09
6. Primary Metals & Articles Thereof	76.14	251.83	1.94	43.04	29.75
7. Machinery, Optical & Precision Instruments	166.08	96.20	-0.10	-1.82	-1.09
8. Electronic Machinery	355.47	78.55	0.58	-2.75	-2.83
9. Transportation Equipment & Parts	20.86	96.85	-0.10	-2.78	-1.93
10. Miscellaneous Products	17.02	105.19	0.41	2.61	3.23
Basic Group (on U.S.D. Basis)					
General Index	1,000.00	135.16	-1.90	7.36	7.05
1. Animal, Vegetable Products & Prepared Foods	47.60	134.73	0.94	10.49	3.19
2. Mineral Products	134.52	236.76	-8.28	6.46	23.51
3. Textiles & Textile Articles	23.09	109.74	-0.22	0.33	-0.42
4. Wood, Paper, Pulp & Articles Thereof	25.78	125.75	0.47	6.28	1.82
5. Chemicals, Plastics, Rubber & Articles Thereof	133.44	149.11	-0.24	8.33	2.84
6. Primary Metals & Articles Thereof	76.14	258.45	1.57	43.08	26.91
7. Machinery, Optical & Precision Instruments	166.08	98.75	-0.44	-1.78	-3.18
8. Electronic Machinery	355.47	80.62	0.22	-2.70	-4.90
9. Transportation Equipment & Parts	20.86	99.43	-0.47	-2.76	-4.00
10. Miscellaneous Products	17.02	107.98	0.05	2.62	1.04

Note: Due to late reports and corrections by respondents all data are subject to revision 3 months after original publication.

Table 4 The Changes of Export Price Indices

Sept. 2006

Groups	Weight (%)	Index of Sept. 2006 (2001=100)	Compared with Last Month (%)	Compared with the Same Month of Last Year (%)	The First Nine Months of 2006 Compared with the Same Period of Last Year (%)
Basic Group (on N.T.D. Basis)					
General Index	1,000.00	101.64	0.46	3.67	2.44
1. Animal, Vegetable Products & Prepared Foods	15.98	124.05	-3.78	2.60	5.59
2. Textiles & Textile Articles	103.87	104.01	0.96	2.31	1.90
3. Wood, Paper, Pulp & Articles Thereof	10.44	109.01	0.48	2.91	3.07
4. Chemicals, Plastics, Rubber & Articles Thereof	99.77	135.69	0.47	8.36	3.84
5. Primary Metals & Articles Thereof	93.17	166.79	1.69	17.49	4.68
6. Machinery, Optical & Precision Instruments	97.27	95.29	0.45	-1.97	0.11
7. Electronic Machinery	479.49	73.82	0.67	-1.32	-0.29
8. Transportation Equipment & Parts	32.16	95.95	0.73	2.00	-1.30
9. Miscellaneous Products	67.85	134.40	-2.03	3.81	12.05
Basic Group (on U.S.D. Basis)					
General Index	1,000.00	104.35	0.11	3.71	0.25
1. Animal, Vegetable Products & Prepared Foods	15.98	127.27	-4.14	2.62	3.36
2. Textiles & Textile Articles	103.87	106.79	0.59	2.35	-0.27
3. Wood, Paper, Pulp & Articles Thereof	10.44	111.92	0.12	2.95	0.89
4. Chemicals, Plastics, Rubber & Articles Thereof	99.77	139.25	0.11	8.40	1.60
5. Primary Metals & Articles Thereof	93.17	171.22	1.32	17.53	2.39
6. Machinery, Optical & Precision Instruments	97.27	97.84	0.08	-1.93	-2.00
7. Electronic Machinery	479.49	75.75	0.30	-1.30	-2.39
8. Transportation Equipment & Parts	32.16	98.48	0.36	2.02	-3.43
9. Miscellaneous Products	67.85	138.04	-2.38	3.84	9.72

Note: Due to late reports and corrections by respondents all data are subject to revision 3 months after original publication.