

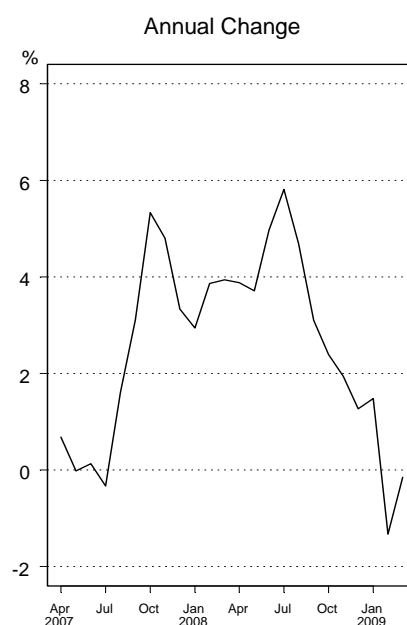
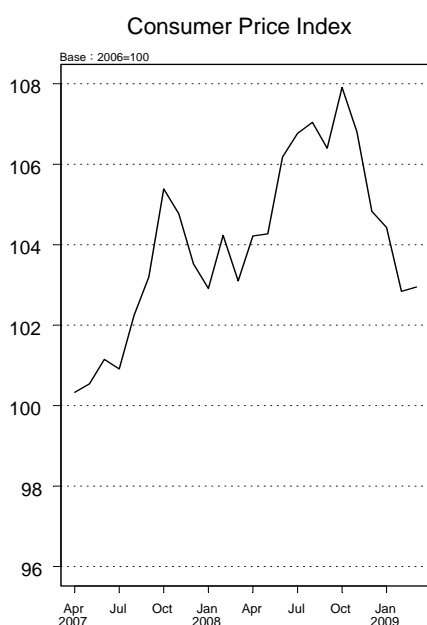
## The Price Indices for March 2009

### Consumer Price Indices (CPI)

The CPI in March 2009 was 102.95 (2006=100), rising 0.11% from previous month. Due mainly to prices of Vegetables increased 17.29% and Fuels & Lubricants went up 2.33%, while Clothing prices declined 1.71%. The General Index excluding Fruits, Vegetables, Fish, Shellfish and Energy, i.e. core CPI, moved down 0.22%.

The annual change for CPI in March 2009, compared with the same month of previous year, fell 0.15%. Prices of Transportation & Communication prices went down 6.49%, due primarily to prices of Fuels & Lubricants decreased 22.16%. While Food Prices increased 2.46%, of which prices of Fish & Shellfish, Vegetables and Meat went up 6.10%, 4.68% and 3.88% individually, whereas Fruits prices went down 11.73%. The core CPI rose 0.81%.

For the first quarter of 2009, the CPI decreased by 0.01% over the same period of previous year, as price of Commodity moved down 1.20% and Service went up 0.93%. The core CPI advanced 1.23%.

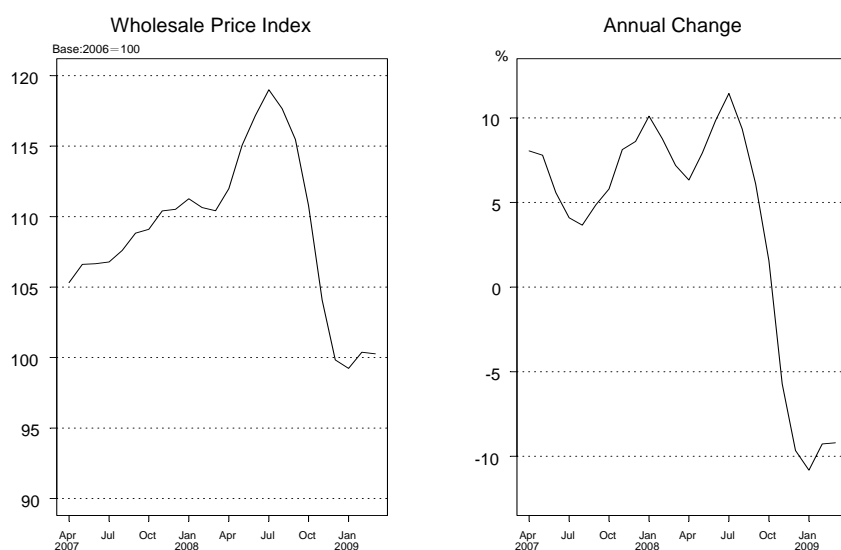


## Wholesale Price Indices (WPI)

The WPI in March 2009 was 100.26 (2006=100), falling 0.12% from previous month, due mainly to prices of Machinery Equipment, Basic Metal and Electronic Parts and Components declined 2.14%, 1.85% and 0.31% respectively. Domestic Sales Excluding Imports price moved up 0.47%, Imports and Exports prices moved down 0.09% and 0.67% separately.

The annual change of WPI in March 2009, comparing with the same month of 2008, decreasing 9.20%, due mainly to prices of Crude Petroleum and Natural Gas went down 44.62%, Basic Metal and Chemical Material moved down 32.54% and 25.90% individually. Domestic Sales Excluding Imports prices fell 11.59% and Imports and Exports prices went down 11.41% and 4.57% respectively.

For the first quarter of 2009, the WPI went down 9.77% compared with the same period of previous year, of which the Import and Export Price Index declined 11.64% and 6.64% separately.



### Statistical Tables

Table1 The Changes of Consumer Price Indices

Table2 The Changes of Wholesale Price Indices

Table3 The Changes of Import Price Indices

Table4 The Changes of Export Price Indices

### For Further Information:

Statistics Database: <http://eng.stat.gov.tw/>

DGBAS news releases on the Internet: <http://eng.dgbas.gov.tw/>

Tel: +886-2-23803449; Fax: +886-2-23803465

## Table 1 The Changes of Consumer Price Indices

March 2009

Groups	Weight (%)	Index of March 2009 (2006=100)	Compared with Previous Month (%)	Compared with the Same Month of Previous Year (%)	The First Three Months of 2009 Compared with the Same Period of Previous Year (%)
General Index	1,000.00	102.95	0.11	-0.15	-0.01
Basic Group					
1. Food	260.82	108.79	0.68	2.46	2.82
Meat	23.08	118.06	-1.22	3.88	6.20
Fish & Shellfish	16.71	122.18	-1.34	6.10	9.02
Vegetables	24.81	80.33	17.29	4.68	-3.45
Fruits	27.59	92.52	-0.67	-11.73	-12.56
2. Clothing	41.72	96.22	-1.71	-1.40	-1.61
Garments	26.97	90.67	-3.03	-2.83	-2.88
3. Housing	279.47	101.68	-0.04	0.43	0.56
Residential Rent	185.40	100.65	-0.06	-0.04	0.06
Household Keeping Services	14.53	96.39	0.00	0.43	-0.21
Water, Electricity & Gas Supply	36.87	104.34	-0.08	2.17	1.95
4. Transportation & Communication	140.42	97.40	0.28	-6.49	-6.65
Fuels & Lubricants	32.55	89.25	2.33	-22.16	-24.22
Transportation & Communication Services and Vehicle Parts	80.30	101.69	-0.31	0.14	0.56
5. Medicines & Medical Care	47.41	106.29	0.01	0.41	0.64
Medical Care Services	33.02	101.81	0.06	0.34	0.36
Medicines & Health Food	10.62	122.17	-0.15	0.74	1.56
6. Education & Entertainment	171.48	100.35	-0.26	-0.31	-0.30
Educational Expense	111.25	100.22	0.06	-0.29	-0.29
Entertainment Expense	60.22	100.55	-0.85	-0.35	-0.29
7. Miscellaneous	58.68	104.72	0.14	1.38	1.78
Tobacco & Betelnut	14.65	106.62	-0.06	0.82	1.26
Personal Care Services	14.78	99.90	0.03	-0.29	-0.13
Commodity and Service Groups					
1. Commodity	437.11	102.59	0.41	-1.22	-1.20
(Excluding Food)	264.95	99.38	-0.04	-3.52	-3.56
Non-durable Consumer Goods (Excluding Food)	299.12	105.23	0.80	-0.60	-0.68
Semi-durable Consumer Goods	126.96	102.35	0.46	-4.34	-4.68
Durable Consumer Goods	62.85	97.79	-1.10	-0.37	-0.40
75.14	94.80	-0.03	-4.64	-4.14	
2. Service	562.89	102.99	-0.12	0.70	0.93
Food	88.66	111.52	0.00	2.91	3.77
Housing	209.54	100.37	-0.09	-0.12	-0.04
Transportation & Communication	76.99	101.21	-0.34	-0.07	0.36
Medical Care	33.02	101.81	0.06	0.34	0.36
Education & Entertainment	129.64	103.81	-0.22	1.07	1.06
Miscellaneous	23.83	99.73	0.17	-0.25	-0.17
Special Groups					
General Index Excluding Fruits & Vegetables	947.60	103.83	-0.17	0.11	0.46
General Index Excluding Food	739.18	100.79	-0.11	-1.11	-1.05
General Index Excluding Fruits, Vegetables, Fish, Shellfish & Energy	866.64	104.01	-0.22	0.81	1.23

Note : Due to late reports and corrections by respondents all data are subject to revision 3 months after original publication.

## Table 2 The Changes of Wholesale Price Indices

March 2009

Groups	Weight (%)	Index of March 2009 (2006=100)	Compared with Previous Month (%)	Compared with the Same Month of Previous Year (%)	The First Three Months of 2009 Compared with the Same Period of Previous Year (%)
General Index	1,000.00	100.26	-0.12	-9.20	-9.77
Domestic Sales Excluding Imports	307.86	100.72	0.47	-11.59	-11.06
Imports	327.09	104.02	-0.09	-11.41	-11.64
Exports	365.05	94.98	-0.67	-4.57	-6.64
Basic Group					
1. Agriculture, Forestry, Fishing and Animal Husbandry Products	27.15	118.78	2.24	-6.60	-5.88
(1) Farm Products	12.87	110.95	7.21	-15.01	-17.97
(2) Poultry & Livestock Products	6.60	129.52	-0.55	-3.70	2.97
(3) Forest Products	0.41	95.46	-6.57	-10.21	-6.05
(4) Fishery Products	7.27	122.64	-2.22	8.12	11.45
2. Quarrying and Minerals Products	57.59	100.44	5.14	-30.60	-31.40
(1) Crude Petroleum and Natural Gas	45.78	80.70	7.46	-44.62	-46.47
(2) Sand, Stone and Clay Quarrying	2.56	116.99	-0.65	-8.30	-7.44
(3) Other Minerals Products	9.25	194.10	1.74	29.68	33.90
3. Manufacturing Products	890.99	98.50	-0.54	-8.10	-8.75
(1) Foods	18.50	116.76	-0.03	-3.54	-2.69
(2) Beverages	5.34	103.33	0.16	2.41	2.04
(3) Tobaccos	2.49	103.78	0.03	1.70	1.10
(4) Textile Products	21.67	108.28	0.30	2.70	1.03
(5) Wearing Apparel and Clothing Accessories	4.65	102.68	-0.11	8.07	5.43
(6) Leather, Fur and Related Products	4.97	106.89	0.35	4.28	2.28
(7) Wood and Bamboo Products	2.15	109.73	-0.23	4.52	3.37
(8) Pulp, Paper, Paper Products & Printed Matter	15.11	105.36	-1.25	-7.85	-5.54
(9) Petroleum & Coal Products	54.63	86.83	-0.56	-33.20	-33.54
(10) Chemical Material	91.92	85.95	1.78	-25.90	-28.66
(11) Chemical Products and Medical Goods	28.00	112.31	-0.79	8.15	7.57
(12) Rubber & Plastic Products	22.42	112.83	-0.51	6.87	6.35
(13) Non-metallic Mineral Products	13.93	116.38	-1.56	4.61	6.75
(14) Basic Metal	84.77	92.49	-1.85	-32.54	-28.41
(15) Fabricated Metal Products	42.26	109.45	-0.94	-4.02	-2.61
(16) Electronic Parts and Components	261.17	85.53	-0.31	-0.79	-4.19
(17) Computer, Electronic and Optical Products	64.22	91.19	-0.23	5.00	1.38
(18) Electrical Equipment	34.70	100.43	0.21	-6.38	-6.36
(19) Machinery and Equipment	67.61	114.33	-2.14	11.09	11.59
(20) Transport Equipment and Parts	34.78	109.04	-1.06	7.62	7.67
(21) Furniture and Fixtures	5.20	112.05	-2.44	11.15	10.74
(22) Miscellaneous Products	10.51	110.82	-0.73	11.93	9.58
4. Water Supply, Electricity & Gas	24.28	121.18	-0.13	17.99	17.66
By Stage of Processing					
1. Raw Materials	138.48	101.86	2.63	-27.64	-28.58
2. Intermediate Materials	356.29	102.88	-0.49	-9.64	-8.96
3. Finished Goods	140.17	107.42	-0.32	3.71	3.57
(1) Capital Goods	53.38	110.45	-2.46	9.30	10.47
(2) Consumer Goods	86.79	105.09	1.11	0.40	-0.51
Special Groups					
Domestic Sales	634.95	102.19	0.18	-11.51	-11.37
Domestic Products	672.91	98.34	-0.13	-8.02	-8.77
Non-Heavy Chemical Industrial Products	166.01	109.58	-0.53	3.29	2.79
Heavy Chemical Industrial Products	724.98	95.96	-0.55	-10.76	-11.43

Note: Due to late reports and corrections by respondents all data are subject to revision 3 months after

### Table 3 The Changes of Import Price Indices

March 2009

Groups	Weight (%)	Index of March 2009 (2006=100)	Compared with Previous Month (%)	Compared with the Same Month of Previous Year (%)	The First Three Months of 2009 Compared with the Same Period of Previous Year (%)
<b>Basic Group (on N.T.D. Basis)</b>					
General Index	1,000.00	104.02	-0.09	-11.41	-11.64
1. Animal, Vegetable Products & Prepared Foods	34.64	122.15	-0.27	-12.69	-13.39
2. Mineral Products & Nonmetallic Mineral Products	208.51	101.35	4.10	-30.25	-31.01
3. Textiles & Textile Articles	13.85	109.52	0.18	5.61	3.23
4. Wood, Paper, Pulp & Articles Thereof	17.93	105.58	-2.97	-4.54	-4.43
5. Chemicals, Plastics, Rubber & Articles Thereof	147.68	102.60	0.15	-8.31	-9.98
6. Primary Metals & Articles Thereof	118.38	91.02	-1.77	-33.46	-29.95
7. Machinery, Optical & Precision Instruments	166.28	114.75	-3.05	10.96	12.37
8. Electronic Machinery	258.41	92.26	-0.01	5.37	1.69
9. Transportation Equipment & Parts	21.11	119.05	-2.89	12.53	14.65
10. Miscellaneous Products	13.21	114.11	0.18	2.08	0.85
<b>Basic Group (on U.S.D. Basis)</b>					
General Index	1,000.00	98.60	-0.28	-21.05	-17.99
1. Animal, Vegetable Products & Prepared Foods	34.64	115.81	-0.46	-22.19	-19.60
2. Mineral Products & Nonmetallic Mineral Products	208.51	96.04	3.89	-37.83	-36.00
3. Textiles & Textile Articles	13.85	103.80	-0.02	-5.88	-4.16
4. Wood, Paper, Pulp & Articles Thereof	17.93	100.09	-3.16	-14.92	-11.25
5. Chemicals, Plastics, Rubber & Articles Thereof	147.68	97.27	-0.05	-18.29	-16.44
6. Primary Metals & Articles Thereof	118.38	86.34	-1.96	-40.70	-35.00
7. Machinery, Optical & Precision Instruments	166.28	108.75	-3.25	-1.11	4.33
8. Electronic Machinery	258.41	87.45	-0.22	-6.10	-5.58
9. Transportation Equipment & Parts	21.11	112.83	-3.08	0.29	6.44
10. Miscellaneous Products	13.21	108.15	-0.02	-9.02	-6.39

Note: Due to late reports and corrections by respondents all data are subject to revision 3 months after original publication.

Table 4 The Changes of Export Price Indices

March 2009

Groups	Weight (%)	Index of March 2009 (2006=100)	Compared with Previous Month (%)	Compared with the Same Month of Previous Year (%)	The First Three Months of 2009 Compared with the Same Period of Previous Year (%)
Basic Group (on N.T.D. Basis)					
General Index	1,000.00	94.98	-0.67	-4.57	-6.64
1. Animal, Vegetable Products & Prepared Foods	9.95	114.61	-2.28	5.35	6.80
2. Textiles & Textile Articles	53.37	108.64	0.16	5.09	2.44
3. Wood, Paper, Pulp & Articles Thereof	7.52	103.78	-0.06	-8.80	-8.13
4. Chemicals, Plastics, Rubber & Articles Thereof	123.31	97.03	0.53	-12.22	-14.37
5. Primary Metals & Articles Thereof	111.70	97.55	-1.33	-14.17	-12.88
6. Machinery, Optical & Precision Instruments	154.88	95.72	-0.39	1.82	-1.57
7. Electronic Machinery	424.79	87.20	-0.23	1.17	-2.90
8. Transportation Equipment & Parts	32.07	110.65	-1.18	10.53	9.09
9. Miscellaneous Products	82.43	88.24	-4.40	-23.48	-21.66
Basic Group (on U.S.D. Basis)					
General Index	1,000.00	90.03	-0.87	-14.98	-13.32
1. Animal, Vegetable Products & Prepared Foods	9.95	108.60	-2.47	-6.14	-0.89
2. Textiles & Textile Articles	53.37	102.96	-0.05	-6.37	-4.92
3. Wood, Paper, Pulp & Articles Thereof	7.52	98.36	-0.25	-18.76	-14.77
4. Chemicals, Plastics, Rubber & Articles Thereof	123.31	91.98	0.33	-21.79	-20.53
5. Primary Metals & Articles Thereof	111.70	92.49	-1.53	-23.54	-19.15
6. Machinery, Optical & Precision Instruments	154.88	90.70	-0.59	-9.30	-8.63
7. Electronic Machinery	424.79	82.62	-0.45	-9.87	-9.84
8. Transportation Equipment & Parts	32.07	104.86	-1.38	-1.53	1.28
9. Miscellaneous Products	82.43	83.62	-4.60	-31.83	-27.29

Note: Due to late reports and corrections by respondents all data are subject to revision 3 months after original publication.